



Antenna Model No.	YDS1718ST14X2-2N(F)	YDS1718ST14V1-N(F)	YDS1721ST12V1-N(F)	YDS1721ST15V1-N(F)
Frequency Range	1700-1800 MHZ	1700-1800 MHZ	1710-2170 MHZ	1710-2170 MHZ
Polarization	±45°	Vertical	Vertical	Vertical
Gain	14 dBi	14 dBi	12 dBi	15 dBi
Horizontal Beamwidth	32 °	32 °	65 °	65 °
Vertical Beamwidth	30 °	30 °	30 °	15 °
Front-to-back ratio	≥25 dB	≥25 dB	≥25 dB	≥25 dB
Isolation	≥25 dB			
Nominal Impedance	50 Ohms	50 Ohms	50 Ohms	50 Ohms
VSWR	≤ 1.5	≤ 1.5	≤ 1.5	≤ 1.5
Maximum Power	200 Watts	200 Watts	300 Watts	300 Watts
Lightning protection	DC ground	DC ground	DC ground	DC ground
Connector	2×N Female	N Female	N Female	N Female
Dimensions	300×280×85 mm	300×280×85 mm	300×160×80 mm	550×160×80 mm
Weight	3 kg	3 kg	2 kg	2.7 kg
Reflector	UPVC	UPVC	UPVC	UPVC
Colour	gray	gray	gray	gray
Adjustable Angle	0 ~ 15 °	0 ~ 15 °	0 ~ 15 °	0 ~ 15 °
Operating temperature	-40 ~ 60 °C	-40 ~ 60 °C	-40 ~ 60 °C	-40 ~ 60 °C
Wind Load	60 m/s	60 m/s	60 m/s	60 m/s
Mast Mount Diameter	35-75 mm	35-75 mm	35-75 mm	35-75 mm

[www.YDSCOMM.com](http://www.YDSCOMM.com) [sales@ydscomm.com](mailto:sales@ydscomm.com) Tel: (+86) 13790087202 (WeChat, QQ, Mobile)



Antenna Model No.	YDS1721ST17V1-N(F)	YDS1721ST14V1-N(F)	YDS1721ST17V1B-N(F)	YDS2223ST14X2-2N(F)
Frequency Range	1710-2170 MHZ	1710-2170 MHZ	1710-2170 MHZ	2200-2300 MHZ
Polarization	Vertical	Vertical	Vertical	±45°
Gain	17 dBi	14 dBi	17 dBi	14 dBi
Horizontal Beamwidth	65 °	90 °	90 °	32 °
Vertical Beamwidth	8 °	15 °	6.5 °	30 °
Front-to-back ratio	≥25 dB	≥23 dB	≥23 dB	≥25 dB
Isolation				≥25 dB
Nominal Impedance	50 Ohms	50 Ohms	50 Ohms	50 Ohms
VSWR	≤ 1.5	≤ 1.5	≤ 1.5	≤ 1.5
Maximum Power	300 Watts	300 Watts	300 Watts	200 Watts
Lightning protection	DC ground	DC ground	DC ground	DC ground
Connector	N Female	N Female	N Female	2×N Female
Dimensions	1080×160×80 mm	550×160×80 mm	1320×160×80 mm	300×280×85 mm
Weight	4.5 kg	2.7 kg	6 kg	3 kg
Reflector	UPVC	UPVC	UPVC	UPVC
Colour	gray	gray	gray	gray
Adjustable Angle	0 ~ 15 °	0 ~ 15 °	0 ~ 10 °	0 ~ 15 °
Operating temperature	-40 ~ 60 °C	-40 ~ 60 °C	-40 ~ 60 °C	-40 ~ 60 °C
Wind Load	60 m/s	60 m/s	60 m/s	60 m/s
Mast Mount Diameter	35-75 mm	35-75 mm	35-75 mm	35-75 mm

[www.YDSCOMM.com](http://www.YDSCOMM.com) [sales@ydscomm.com](mailto:sales@ydscomm.com) Tel: (+86) 13790087202 (WeChat, QQ, Mobile)



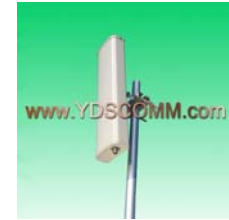
Antenna Model No.	YDS2123ST14V1-N(F)	YDS1726ST14X2-2N(F)	YDS1726ST15V1-N(F)	YDS1726ST12V1-N(F)
Frequency Range	2195-2305 MHZ	1710-2200 / 2200-2690 MHZ	1710-2200 / 2200-2690 MHZ	1710-2200 / 2200-2690 MHZ
Polarization	Vertical	±45°	Vertical	Vertical
Gain	14 dBi	13.5 / 14 dBi	15 / 15.5 dBi	11.5 / 12 dBi
Horizontal Beamwidth	30 °	35 ° / 30 °	33 ° / 30 °	68 ° / 65 °
Vertical Beamwidth	30 °	30 ° / 28 °	30 ° / 28 °	30 ° / 25 °
Front-to-back ratio	≥ 25 dB	≥ 25 dB	≥ 25 dB	≥ 23 dB
Isolation		≥ 25 dB		
Nominal Impedance	50 Ohms	50 Ohms	50 Ohms	50 Ohms
VSWR	≤ 1.5	≤ 1.5	≤ 1.5	≤ 1.5
Maximum Power	200 Watts	200 Watts	200 Watts	300 Watts
Lightning protection	DC ground	DC ground	DC ground	DC ground
Connector	N Female	2×N Female	N Female	N Female
Dimensions	300×280×85 mm	300×280×85 mm	300×280×85 mm	250×160×80 mm
Weight	3 kg	3 kg	2.5 kg	2.5 kg
Reflector	UPVC	UPVC	UPVC	UPVC
Colour	gray	gray	gray	gray
Adjustable Angle	0 ~ 15 °	0 ~ 15 °	0 ~ 15 °	0 ~ 15 °
Operating temperature	-40 ~ 60 °C	-40 ~ 60 °C	-40 ~ 60 °C	-40 ~ 60 °C
Wind Load	60 m/s	60 m/s	60 m/s	60 m/s
Mast Mount Diameter	35-75 mm	35-75 mm	35-75 mm	35-75 mm



Antenna Model No.	YDS1726ST12V1B-N(F)	YDS1727ST12V1-N(F)	YDS1726ST13V1-N(F)	YDS1727ST14V1-N(F)
Frequency Range	1710-2200 / 2200-2690 MHz	1710-2200 / 2200-2700 MHz	1710-2200 / 2200-2690 MHz	1710-2700 MHz
Polarization	Vertical	Vertical	Vertical	Vertical
Gain	11.5 / 12 dBi	11.5 / 12 dBi	12.5 / 13 dBi	14 dBi
Horizontal Beamwidth	68 ° / 65 °	68 ° / 65 °	68 ° / 65 °	65 °
Vertical Beamwidth	30 ° / 25 °	30 ° / 25 °	25 ° / 20 °	18 °
Front-to-back ratio	≥ 23 dB	≥ 23 dB	≥ 23 dB	≥ 23 dB
Nominal Impedance	50 Ohms	50 Ohms	50 Ohms	50 Ohms
VSWR	≤ 1.5	≤ 1.5	≤ 1.5	≤ 1.5
Maximum Power	200 Watts	200 Watts	300 Watts	200 Watts
Lightning protection	DC ground	DC ground	DC ground	DC ground
Connector	N Female	N Female	N Female	N Female
Dimensions	250×128×56 mm	200×128×56 mm	350×160×80 mm	500×128×56 mm
Weight	1 kg	1 kg	2.5 kg	1.5 kg
Reflector	UPVC	UPVC	UPVC	UPVC
Colour	gray	gray	gray	gray
Adjustable Angle	0 ~ 15 °	0 ~ 15 °	0 ~ 15 °	0 ~ 15 °
Operating temperature	-40 ~ 60 °C	-40 ~ 60 °C	-40 ~ 60 °C	-40 ~ 60 °C
Wind Load	60 m/s	60 m/s	60 m/s	60 m/s
Mast Mount Diameter	35-50 mm	35-50 mm	35-75 mm	35-50 mm

# YDS COMMUNICATIONS ANTENNA

Professional Design Engineering Manufacturer Partner



Antenna Model No.	YDS2327ST16V1-N(F)	YDS2327ST13V1-N(F)	YDS1726ST15V1B-N(F)	YDS1726ST14V1-N(F)
Frequency Range	2300-2700 MHZ	2300-2700 MHZ	1710-2170 / 2300-2690 MHZ	1710-2170 / 2300-2690 MHZ
Polarization	Vertical	Vertical	Vertical	Vertical
Gain	16 dBi	13 dBi	14.5 / 15 dBi	13.5 / 14 dBi
Horizontal Beamwidth	90 °	120 °	65 ° / 60 °	90 ° / 85 °
Vertical Beamwidth	7.5 °	13 °	15 ° / 13 °	15 ° / 13 °
Front-to-back ratio	≥23 dB	≥20 dB	≥25 dB	≥20 dB
Nominal Impedance	50 Ohms	50 Ohms	50 Ohms	50 Ohms
VSWR	≤ 1.5	≤ 1.5	≤ 1.5	≤ 1.5
Maximum Power	100 Watts	100 Watts	300 Watts	300 Watts
Lightning protection	DC ground	DC ground	DC ground	DC ground
Connector	N Female	N Female	N Female	N Female
Dimensions	950×128×56 mm	500×128×56 mm	550×160×80 mm	550×160×80 mm
Weight	2.9 kg	1.4 kg	3 kg	3 kg
Reflector	UPVC	UPVC	UPVC	UPVC
Colour	gray	gray	gray	gray
Adjustable Angle	0 ~ 12 °	0 ~ 15 °	0 ~ 15 °	0 ~ 15 °
Operating temperature	-40 ~ 60 °C	-40 ~ 60 °C	-40 ~ 60 °C	-40 ~ 60 °C
Wind Load	60 m/s	60 m/s	60 m/s	60 m/s
Mast Mount Diameter	35-75 mm	35-75 mm	35-75 mm	35-75 mm

[www.YDSCOMM.com](http://www.YDSCOMM.com) [sales@ydscomm.com](mailto:sales@ydscomm.com) Tel: (+86) 13790087202 (WeChat, QQ, Mobile)

All rights reserved @ YingDeShun Co. Ltd. (YDS Communications). Specifications subject to change without notice.



Antenna Model No.	YDS1726ST13V1B-N(F)	YDS1721ST11.5X4-4N(F)	YDS2327ST12X2-2N(F)	YDS2425ST15X2-2N(F)
Frequency Range	1710-2170 / 2300-2690 MHZ	1710-2180 / 1710-2180 MHZ	2300-2700 MHZ	2400-2500 MHZ
Polarization	Vertical	±45° / ±45°	±45°	±45°
Gain	12.5 / 13 dBi	11.5 / 11.5 dBi	12 dBi	15 dBi
Horizontal Beamwidth	120° / 115°	65° / 65°	65°	65°
Vertical Beamwidth	15° / 13°	30° / 30°	30°	15°
Front-to-back ratio	≥18 dB	≥25 dB	≥25 dB	≥25 dB
Isolation		≥25 dB	≥28 dB	≥28 dB
Nominal Impedance	50 Ohms	50 Ohms	50 Ohms	50 Ohms
VSWR	≤ 1.5	≤ 1.5	≤ 1.5	≤ 1.5
Maximum Power	300 Watts	200 Watts	100 Watts	100 Watts
Lightning protection	DC ground	DC ground	DC ground	DC ground
Connector	N Female	2×N Female / 2×N Female	2×N Female	2×N Female
Dimensions	550×160×80 mm	400×320×80 mm	230×128×56 mm	500×128×56 mm
Weight	3 kg	3.5 kg	1.1 kg	1.5 kg
Reflector	UPVC	UPVC	UPVC	UPVC
Colour	gray	gray	gray	gray
Adjustable Angle	0 ~ 15°	0 ~ 15°	0 ~ 15°	0 ~ 15°
Operating temperature	-40 ~ 60 °C	-40 ~ 60 °C	-40 ~ 60 °C	-40 ~ 60 °C
Wind Load	60 m/s	60 m/s	60 m/s	60 m/s
Mast Mount Diameter	35-75 mm	40-70 mm	35-75 mm	35-75 mm

# YDS COMMUNICATIONS ANTENNA

Professional Design Engineering Manufacturer Partner



Antenna Model No.	YDS2327ST15X2-2N(F)	YDS2327ST17X2-2N(F)	YDS2327ST12V1-N(F)	YDS2327ST15V1-N(F)
Frequency Range	2300-2700 MHZ	2300-2700 MHZ	2300-2700 MHZ	2300-2700 MHZ
Polarization	±45°	±45°	Vertical	Vertical
Gain	15 dBi	17 dBi	12 dBi	15 dBi
Horizontal Beamwidth	65 °	65 °	65 °	65 °
Vertical Beamwidth	15 °	7.5 °	30 °	13 °
Front-to-back ratio	≥25 dB	≥25 dB	≥25 dB	≥25 dB
Isolation	≥28 dB	≥28 dB		
Nominal Impedance	50 Ohms	50 Ohms	50 Ohms	50 Ohms
VSWR	≤ 1.5	≤ 1.5	≤ 1.5	≤ 1.5
Maximum Power	100 Watts	100 Watts	100 Watts	100 Watts
Lightning protection	DC ground	DC ground	DC ground	DC ground
Connector	2×N Female	2×N Female	N Female	N Female
Dimensions	500×128×56 mm	950×128×56 mm	230×128×56 mm	500×128×56 mm
Weight	1.5 kg	3.2 kg	1 kg	1.4 kg
Reflector	UPVC	UPVC	UPVC	UPVC
Colour	gray	gray	gray	gray
Adjustable Angle	0 ~ 15 °	0 ~ 12 °	0 ~ 15 °	0 ~ 15 °
Operating temperature	-40 ~ 60 °C	-40 ~ 60 °C	-40 ~ 60 °C	-40 ~ 60 °C
Wind Load	60 m/s	60 m/s	60 m/s	60 m/s
Mast Mount Diameter	35-75 mm	35-75 mm	35-75 mm	35-75 mm

[www.YDSCOMM.com](http://www.YDSCOMM.com) [sales@ydscomm.com](mailto:sales@ydscomm.com) Tel: (+86) 13790087202 (WeChat, QQ, Mobile)

All rights reserved @ YingDeShun Co. Ltd. (YDS Communications). Specifications subject to change without notice.

# YDS COMMUNICATIONS ANTENNA

Professional Design Engineering Manufacturer Partner



Antenna Model No.	YDS2327ST17V1-N(F)	YDS2327ST11X2-2N(F)	YDS2327ST14X2-2N(F)	YDS2327ST16X2-2N(F)
Frequency Range	2300-2700 MHZ	2300-2700 MHZ	2300-2700 MHZ	2300-2700 MHZ
Polarization	Vertical	±45°	±45°	±45°
Gain	17 dBi	11 dBi	14 dBi	16 dBi
Horizontal Beamwidth	65 °	90 °	90 °	90 °
Vertical Beamwidth	7.5 °	30 °	15 °	7.5 °
Front-to-back ratio	≥25 dB	≥22 dB	≥23 dB	≥23 dB
Isolation			≥28 dB	≥28 dB
Nominal Impedance	50 Ohms	50 Ohms	50 Ohms	50 Ohms
VSWR	≤ 1.5	≤ 1.5	≤ 1.5	≤ 1.5
Maximum Power	100 Watts	100 Watts	100 Watts	100 Watts
Lightning protection	DC ground	DC ground	DC ground	DC ground
Connector	N Female	2×N Female	2×N Female	2×N Female
Dimensions	950×128×56 mm	230×128×56 mm	500×128×56 mm	950×128×56 mm
Weight	2.9 kg	1.1 kg	1.5 kg	3.2 kg
Reflector	UPVC	UPVC	UPVC	UPVC
Colour	gray	gray	gray	gray
Adjustable Angle	0 ~ 12 °	0 ~ 15 °	0 ~ 15 °	0 ~ 12 °
Operating temperature	-40 ~ 60 °C	-40 ~ 60 °C	-40 ~ 60 °C	-40 ~ 60 °C
Wind Load	60 m/s	60 m/s	60 m/s	60 m/s
Mast Mount Diameter	35-75 mm	35-75 mm	35-75 mm	35-75 mm

[www.YDSCOMM.com](http://www.YDSCOMM.com) [sales@ydscomm.com](mailto:sales@ydscomm.com) Tel: (+86) 13790087202 (WeChat, QQ, Mobile)

All rights reserved @ YingDeShun Co. Ltd. (YDS Communications). Specifications subject to change without notice.



# YDS COMMUNICATIONS ANTENNA

Professional Design Engineering Manufacturer Partner



Antenna Model No.	YDS2327ST11V1-N(F)	YDS2327ST14V1-N(F)	YDS2327ST15V1B-N(F)	YDS2425ST14V1-N(F)
Frequency Range	2300-2700 MHZ	2300-2700 MHZ	2300-2700 MHZ	2400-2500 MHZ
Polarization	Vertical	Vertical	Vertical	Vertical
Gain	11 dBi	14 dBi	15 dBi	14 dBi
Horizontal Beamwidth	90 °	90 °	120 °	40 °
Vertical Beamwidth	30 °	13 °	7.5 °	32 °
Front-to-back ratio	≥23 dB	≥23 dB	≥20 dB	≥25 dB
Isolation				
Nominal Impedance	50 Ohms	50 Ohms	50 Ohms	50 Ohms
VSWR	≤ 1.5	≤ 1.5	≤ 1.5	≤ 1.5
Maximum Power	100 Watts	100 Watts	100 Watts	100 Watts
Lightning protection	DC ground	DC ground	DC ground	DC ground
Connector	N Female	N Female	N Female	N Female
Dimensions	230×128×56 mm	500×128×56 mm	950×128×56 mm	250×167×55 mm
Weight	1 kg	1.4 kg	2.9 kg	1.2 kg
Reflector	UPVC	UPVC	UPVC	UPVC
Colour	gray	gray	gray	gray
Adjustable Angle	0 ~ 15 °	0 ~ 15 °	0 ~ 12 °	0 ~ 15 °
Operating temperature	-40 ~ 60 °C	-40 ~ 60 °C	-40 ~ 60 °C	-40 ~ 60 °C
Wind Load	60 m/s	60 m/s	60 m/s	60 m/s
Mast Mount Diameter	35-75 mm	35-75 mm	35-75 mm	35-75 mm

[www.YDSCOMM.com](http://www.YDSCOMM.com) [sales@ydscomm.com](mailto:sales@ydscomm.com) Tel: (+86) 13790087202 (WeChat, QQ, Mobile)

All rights reserved @ YingDeShun Co. Ltd. (YDS Communications). Specifications subject to change without notice.



Antenna Model No.	YDS2425ST16V1-N(F)	YDS2425ST12V1-N(F)	YDS2425ST15V1-N(F)	YDS2425ST15V1B-N(F)
Frequency Range	2400-2500 MHZ	2400-2500 MHZ	2400-2500 MHZ	2400-2500 MHZ
Polarization	Vertical	Vertical	Vertical	Vertical
Gain	16 dBi	12 dBi	15 dBi	15 dBi
Horizontal Beamwidth	60 °	65 °	65 °	65 °
Vertical Beamwidth	15 °	30 °	15 °	15 °
Front-to-back ratio	≥25 dB	≥25 dB	≥25 dB	≥25 dB
Nominal Impedance	50 Ohms	50 Ohms	50 Ohms	50 Ohms
VSWR	≤ 1.5	≤ 1.5	≤ 1.5	≤ 1.5
Maximum Power	50 Watts	100 Watts	100 Watts	100 Watts
Lightning protection	DC ground	DC ground	DC ground	DC ground
Connector	N Female	N Female	N Female	N Female
Dimensions	454×137×30 mm	230×128×56 mm	500×128×56 mm	454×137×30 mm
Weight	0.8 kg	1 kg	1.4 kg	0.6 kg
Reflector	ABS	UPVC	UPVC	ABS
Colour	White	gray	gray	White
Adjustable Angle	0 ~ 30 °	0 ~ 15 °	0 ~ 15 °	0 ~ 30 °
Operating temperature	-40 ~ 60 °C	-40 ~ 60 °C	-40 ~ 60 °C	-40 ~ 60 °C
Wind Load	60 m/s	60 m/s	60 m/s	60 m/s
Mast Mount Diameter	35-60 mm	35-75 mm	35-75 mm	35-50 mm



Antenna Model No.	YDS2425ST17V1-N(F)	YDS2425ST18V1-N(F)	YDS2425ST11V1-N(F)	YDS2425ST14V1C-N(F)
Frequency Range	2400-2500 MHZ	2400-2500 MHZ	2400-2500 MHZ	2400-2500 MHZ
Polarization	Vertical	Vertical	Vertical	Vertical
Gain	17 dBi	18 dBi	11 dBi	14 dBi
Horizontal Beamwidth	65 °	65 °	90 °	90 °
Vertical Beamwidth	7.5 °	6.5 °	30 °	14 °
Front-to-back ratio	≥25 dB	≥25 dB	≥23 dB	≥23 dB
Nominal Impedance	50 Ohms	50 Ohms	50 Ohms	50 Ohms
VSWR	≤ 1.5	≤ 1.5	≤ 1.5	≤ 1.5
Maximum Power	100 Watts	100 Watts	100 Watts	100 Watts
Lightning protection	DC ground	DC ground	DC ground	DC ground
Connector	N Female	N Female	N Female	N Female
Dimensions	950×128×56 mm	1160×128×56 mm	230×128×56 mm	470×170×56 mm
Weight	2.9 kg	3 kg	1 kg	1.5 kg
Reflector	UPVC	UPVC	UPVC	UPVC
Colour	gray	gray	gray	gray
Adjustable Angle	0 ~ 12 °	0 ~ 12 °	0 ~ 15 °	0 ~ 15 °
Operating temperature	-40 ~ 60 °C	-40 ~ 60 °C	-40 ~ 60 °C	-40 ~ 60 °C
Wind Load	60 m/s	60 m/s	60 m/s	60 m/s
Mast Mount Diameter	35-75 mm	35-75 mm	35-75 mm	35-75 mm

# YDS COMMUNICATIONS ANTENNA

Professional Design Engineering Manufacturer Partner



Antenna Model No.	YDS2425ST14V1D-N(F)	YDS2425ST16V1B-N(F)	YDS2425ST10V1-N(F)	YDS2425ST13V1-N(F)
Frequency Range	2400-2500 MHZ	2400-2500 MHZ	2400-2500 MHZ	2400-2500 MHZ
Polarization	Vertical	Vertical	Vertical	Vertical
Gain	14 dBi	16 dBi	10 dBi	13 dBi
Horizontal Beamwidth	90 °	90 °	120 °	120 °
Vertical Beamwidth	15 °	7.5 °	30 °	13 °
Front-to-back ratio	≥23 dB	≥23 dB	≥20 dB	≥20 dB
Nominal Impedance	50 Ohms	50 Ohms	50 Ohms	50 Ohms
VSWR	≤ 1.5	≤ 1.5	≤ 1.5	≤ 1.5
Maximum Power	100 Watts	100 Watts	100 Watts	100 Watts
Lightning protection	DC ground	DC ground	DC ground	DC ground
Connector	N Female	N Female	N Female	N Female
Dimensions	454×137×30 mm	950×128×56 mm	230×128×56 mm	500×128×56 mm
Weight	0.8 kg	2.9 kg	1 kg	1.4 kg
Reflector	ABS	UPVC	UPVC	UPVC
Colour	White	gray	gray	gray
Adjustable Angle	0 ~ 15 °	0 ~ 12 °	0 ~ 15 °	0 ~ 15 °
Operating temperature	-40 ~ 60 °C	-40 ~ 60 °C	-40 ~ 60 °C	-40 ~ 60 °C
Wind Load	60 m/s	60 m/s	60 m/s	60 m/s
Mast Mount Diameter	35-60 mm	35-75 mm	35-75 mm	35-75 mm

[www.YDSCOMM.com](http://www.YDSCOMM.com) [sales@ydscomm.com](mailto:sales@ydscomm.com) Tel: (+86) 13790087202 (WeChat, QQ, Mobile)

All rights reserved @ YingDeShun Co. Ltd. (YDS Communications). Specifications subject to change without notice.



Antenna Model No.	YDS2425ST13V1B-N(F)	YDS2425ST15V1C-N(F)	YDS2425ST15V1D-N(F)	YDS2425ST14V3-3N(F)
Frequency Range	2400-2500 MHZ	2400-2500 MHZ	2400-2500 MHZ	2400-2500 MHZ
Polarization	Vertical	Vertical	Vertical	3×Vertical
Gain	13 dBi	15 dBi	15 dBi	14 dBi
Horizontal Beamwidth	120 °	120 °	120 °	60 °
Vertical Beamwidth	15 °	7.5 °	7.5 °	14 °
Front-to-back ratio	≥23 dB	≥20 dB	≥20 dB	≥22 dB
Nominal Impedance	50 Ohms	50 Ohms	50 Ohms	50 Ohms
VSWR	≤ 1.5	≤ 1.5	≤ 1.5	≤ 1.5
Maximum Power	100 Watts	100 Watts	100 Watts	100 Watts
Lightning protection	DC ground	DC ground	DC ground	DC ground
Connector	N Female	N Female	N Female	3×N Female
Dimensions	454×137×30 mm	950×128×56 mm	950×128×56 mm	470×280×85 mm
Weight	0.8 kg	2.9 kg	2.9 kg	2.4 kg
Reflector	ABS	UPVC	UPVC	UPVC
Colour	White	gray	gray	gray
Adjustable Angle	0 ~ 15 °	0 ~ 12 °	0 ~ 12 °	0 ~ 15 °
Operating temperature	-40 ~ 60 °C	-40 ~ 60 °C	-40 ~ 60 °C	-40 ~ 60 °C
Wind Load	60 m/s	60 m/s	60 m/s	60 m/s
Mast Mount Diameter	35-60 mm	35-75 mm	35-75 mm	35-75 mm

# YDS COMMUNICATIONS ANTENNA

Professional Design Engineering Manufacturer Partner



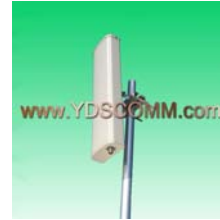
Antenna Model No.	YDS3338ST15X2-2N(F)	YDS3338ST16X2-2N(F)	YDS2425ST14V1B-N(F)	YDS3338ST17X2-2N(F)
Frequency Range	3300-3800 MHZ	3300-3800 MHZ	2400-2500 MHZ	3300-3800 MHZ
Polarization	±45°	±45°	Vertical	±45°
Gain	15 dBi	16 dBi	14 dBi	17 dBi
Horizontal Beamwidth	65 °	65 °	90 °	65 °
Vertical Beamwidth	15 °	9.5 °	13 °	7.5 °
Front-to-back ratio	≥25 dB	≥25 dB	≥23 dB	≥25 dB
Isolation	≥28 dB	≥28 dB		≥28 dB
Nominal Impedance	50 Ohms	50 Ohms	50 Ohms	50 Ohms
VSWR	≤ 1.5	≤ 1.5	≤ 1.5	≤ 1.5
Maximum Power	100 Watts	100 Watts	100 Watts	100 Watts
Lightning protection	DC ground	DC ground	DC ground	DC ground
Connector	2×N Female	2×N Female	N Female	2×N Female
Dimensions	350×128×56 mm	500×128×56 mm	500×128×56 mm	650×128×56 mm
Weight	1.3 kg	1.7 kg	1.4 kg	2.7 kg
Reflector	UPVC	UPVC	UPVC	UPVC
Colour	gray	gray	gray	gray
Adjustable Angle	0 ~ 15 °	0 ~ 15 °	0 ~ 15 °	0 ~ 15 °
Operating temperature	-40 ~ 60 °C	-40 ~ 60 °C	-40 ~ 60 °C	-40 ~ 60 °C
Wind Load	60 m/s	60 m/s	60 m/s	60 m/s
Mast Mount Diameter	35-75 mm	35-75 mm	35-75 mm	35-75 mm

[www.YDSCOMM.com](http://www.YDSCOMM.com) [sales@ydscomm.com](mailto:sales@ydscomm.com) Tel: (+86) 13790087202 (WeChat, QQ, Mobile)

All rights reserved @ YingDeShun Co. Ltd. (YDS Communications). Specifications subject to change without notice.

# YDS COMMUNICATIONS ANTENNA

Professional Design Engineering Manufacturer Partner



Antenna Model No.	YDS3338ST15V1-N(F)	YDS3338ST17V1-N(F)	YDS3338ST14X2-2N(F)	YDS3338ST15X2B-2N(F)
Frequency Range	3300-3800 MHZ	3300-3800 MHZ	3300-3800 MHZ	3300-3800 MHZ
Polarization	Vertical	Vertical	±45°	±45°
Gain	15 dBi	17 dBi	14 dBi	15 dBi
Horizontal Beamwidth	65 °	65 °	90 °	90 °
Vertical Beamwidth	15 °	7.5 °	15 °	9.5 °
Front-to-back ratio	≥25 dB	≥25 dB	≥23 dB	≥23 dB
Isolation			≥28 dB	≥28 dB
Nominal Impedance	50 Ohms	50 Ohms	50 Ohms	50 Ohms
VSWR	≤ 1.5	≤ 1.5	≤ 1.5	≤ 1.5
Maximum Power	100 Watts	100 Watts	100 Watts	100 Watts
Lightning protection	DC ground	DC ground	DC ground	DC ground
Connector	N Female	N Female	2×N Female	2×N Female
Dimensions	350×128×56 mm	650×128×56 mm	350×128×56 mm	500×128×56 mm
Weight	1.3 kg	2.7 kg	1.3 kg	1.7 kg
Reflector	UPVC	UPVC	UPVC	UPVC
Colour	gray	gray	gray	gray
Adjustable Angle	0 ~ 15 °	0 ~ 15 °	0 ~ 15 °	0 ~ 15 °
Operating temperature	-40 ~ 60 °C	-40 ~ 60 °C	-40 ~ 60 °C	-40 ~ 60 °C
Wind Load	60 m/s	60 m/s	60 m/s	60 m/s
Mast Mount Diameter	35-75 mm	35-75 mm	35-75 mm	35-75 mm

[www.YDSCOMM.com](http://www.YDSCOMM.com) [sales@ydscomm.com](mailto:sales@ydscomm.com) Tel: (+86) 13790087202 (WeChat, QQ, Mobile)

All rights reserved @ YingDeShun Co. Ltd. (YDS Communications). Specifications subject to change without notice.

# YDS COMMUNICATIONS ANTENNA

Professional Design Engineering Manufacturer Partner



Antenna Model No.	YDS3338ST16X2B-2N(F)	YDS3338ST14V1-N(F)	YDS3338ST16V1-N(F)	YDS3338ST13V1-N(F)
Frequency Range	3300-3800 MHZ	3300-3800 MHZ	3300-3800 MHZ	3300-3800 MHZ
Polarization	±45°	Vertical	Vertical	Vertical
Gain	16 dBi	14 dBi	16 dBi	13 dBi
Horizontal Beamwidth	90 °	90 °	90 °	120 °
Vertical Beamwidth	7.5 °	15 °	7.5 °	15 °
Front-to-back ratio	≥23 dB	≥23 dB	≥23 dB	≥20 dB
Isolation	≥28 dB			
Nominal Impedance	50 Ohms	50 Ohms	50 Ohms	50 Ohms
VSWR	≤ 1.5	≤ 1.5	≤ 1.5	≤ 1.5
Maximum Power	100 Watts	100 Watts	100 Watts	100 Watts
Lightning protection	DC ground	DC ground	DC ground	DC ground
Connector	2×N Female	N Female	N Female	N Female
Dimensions	650×128×56 mm	350×128×56 mm	650×128×56 mm	350×128×56 mm
Weight	2.7 kg	1.3 kg	2.7 kg	1.3 kg
Reflector	UPVC	UPVC	UPVC	UPVC
Colour	gray	gray	gray	gray
Adjustable Angle	0 ~ 15 °	0 ~ 15 °	0 ~ 15 °	0 ~ 15 °
Operating temperature	-40 ~ 60 °C	-40 ~ 60 °C	-40 ~ 60 °C	-40 ~ 60 °C
Wind Load	60 m/s	60 m/s	60 m/s	60 m/s
Mast Mount Diameter	35-75 mm	35-75 mm	35-75 mm	35-75 mm

[www.YDSCOMM.com](http://www.YDSCOMM.com) [sales@ydscomm.com](mailto:sales@ydscomm.com) Tel: (+86) 13790087202 (WeChat, QQ, Mobile)

All rights reserved @ YingDeShun Co. Ltd. (YDS Communications). Specifications subject to change without notice.



# YDS COMMUNICATIONS ANTENNA

Professional Design Engineering Manufacturer Partner



Antenna Model No.	YDS3338ST15V1B-N(F)	YDS3338ST16X4-4N(F)	YDS5758ST16V1-N(F)	YDS5158ST19V1-N(F)
Frequency Range	3300-3800 MHZ	3300-3800 / 3300-3800 MHZ	5725-5850 MHZ	5150-5850 MHZ
Polarization	Vertical	$\pm 45^\circ / \pm 45^\circ$	Vertical	Vertical
Gain	15 dBi	16 dBi	16 dBi	19 dBi
Horizontal Beamwidth	120 °	65 °	20 °	45 °
Vertical Beamwidth	7.5 °	9.5 °	20 °	7.5 °
Front-to-back ratio	$\geq 20$ dB	$\geq 25$ dB	$\geq 25$ dB	$\geq 25$ dB
Isolation				
Nominal Impedance	50 Ohms	50 Ohms	50 Ohms	50 Ohms
VSWR	$\leq 1.5$	$\leq 1.5$	$\leq 2$	$\leq 2$
Maximum Power	100 Watts	200 Watts	50 Watts	50 Watts
Lightning protection	DC ground	DC ground		DC ground
Connector	N Female	4×N Female	N Female	N Female
Dimensions	650×128×56 mm	500×280×85 mm	230×128×56 mm	400×128×56 mm
Weight	2.7 kg	3 kg	1 kg	1.3 kg
Reflector	UPVC	UPVC	UPVC	UPVC
Colour	gray	gray	gray	gray
Adjustable Angle	0 ~ 15 °	0 ~ 15 °	0 ~ 15 °	0 ~ 15 °
Operating temperature	-40 ~ 60 °C	-40 ~ 60 °C	-40 ~ 60 °C	-40 ~ 60 °C
Wind Load	60 m/s	60 m/s	60 m/s	60 m/s
Mast Mount Diameter	35-75 mm	35-75 mm	35-75 mm	35-75 mm

[www.YDSCOMM.com](http://www.YDSCOMM.com) [sales@ydscomm.com](mailto:sales@ydscomm.com) Tel: (+86) 13790087202 (WeChat, QQ, Mobile)

All rights reserved @ YingDeShun Co. Ltd. (YDS Communications). Specifications subject to change without notice.



Antenna Model No.	YDS5158ST18V1-N(F)	YDS5158ST15X2-2N(F)	YDS4958ST17X2-2N(F)	YDS5158ST17X2-2N(F)
Frequency Range	5150-5850 MHZ	5150-5850 MHZ	4900-5850 MHZ	5150-5850 MHZ
Polarization	Vertical	±45°	±45°	±45°
Gain	18 dBi	2×15 dBi	2×17 dBi	2×17 dBi
Horizontal Beamwidth	60 °	65 °	65 °	65 °
Vertical Beamwidth	7 °	15 °	7.5 °	7.5 °
Front-to-back ratio	≥25 dB	≥20 dB	≥20 dB	≥20 dB
Isolation		≥28 dB	≥28 dB	≥28 dB
Nominal Impedance	50 Ohms	50 Ohms	50 Ohms	50 Ohms
VSWR	≤ 2	≤ 2	≤ 2	≤ 2
Maximum Power	50 Watts	50 Watts	50 Watts	50 Watts
Lightning protection	DC ground	DC ground	DC ground	DC ground
Connector	N Female	2×N Female	2×N Female	2×N Female
Dimensions	454×137×30 mm	230×128×56 mm	400×128×56 mm	400×128×56 mm
Weight	0.8 kg	1.1 kg	1.4 kg	1.4 kg
Reflector	ABS	UPVC	UPVC	UPVC
Colour	White	gray	gray	gray
Adjustable Angle	0 ~ 30 °	0 ~ 15 °	0 ~ 15 °	0 ~ 15 °
Operating temperature	-40 ~ 60 °C	-40 ~ 60 °C	-40 ~ 60 °C	-40 ~ 60 °C
Wind Load	60 m/s	60 m/s	60 m/s	60 m/s
Mast Mount Diameter	35-60 mm	35-75 mm	35-75 mm	35-75 mm

# YDS COMMUNICATIONS ANTENNA

Professional Design Engineering Manufacturer Partner



Antenna Model No.	YDS5158ST15V1-N(F)	YDS5158ST17V1-N(F)	YDS5158ST18V1B-N(F)	YDS5158ST14V1-N(F)
Frequency Range	5150-5850 MHZ	5150-5850 MHZ	5150-5850 MHZ	5150-5850 MHZ
Polarization	Vertical	Vertical	Vertical	Vertical
Gain	15 dBi	17 dBi	18 dBi	14 dBi
Horizontal Beamwidth	65 °	65 °	65 °	90 °
Vertical Beamwidth	15 °	7.5 °	6.5 °	15 °
Front-to-back ratio	≥23 dB	≥23 dB	≥23 dB	≥22 dB
Nominal Impedance	50 Ohms	50 Ohms	50 Ohms	50 Ohms
VSWR	≤ 2	≤ 2	≤ 2	≤ 2
Maximum Power	50 Watts	50 Watts	50 Watts	50 Watts
Lightning protection	DC ground	DC ground	DC ground	DC ground
Connector	N Female	N Female	N Female	N Female
Dimensions	230×128×56 mm	400×128×56 mm	500×128×56 mm	230×128×56 mm
Weight	1 kg	1.3 kg	1.6 kg	1.1 kg
Reflector	UPVC	UPVC	UPVC	UPVC
Colour	gray	gray	gray	gray
Adjustable Angle	0 ~ 15 °	0 ~ 15 °	0 ~ 15 °	0 ~ 15 °
Operating temperature	-40 ~ 60 °C	-40 ~ 60 °C	-40 ~ 60 °C	-40 ~ 60 °C
Wind Load	60 m/s	60 m/s	60 m/s	60 m/s
Mast Mount Diameter	35-75 mm	35-75 mm	35-75 mm	35-75 mm

[www.YDSCOMM.com](http://www.YDSCOMM.com) [sales@ydscomm.com](mailto:sales@ydscomm.com) Tel: (+86) 13790087202 (WeChat, QQ, Mobile)

All rights reserved @ YingDeShun Co. Ltd. (YDS Communications). Specifications subject to change without notice.

# YDS COMMUNICATIONS ANTENNA

Professional Design Engineering Manufacturer Partner



Antenna Model No.	YDS5158ST16V1-N(F)	YDS5158ST17V1B-N(F)	YDS5158ST17V1C-N(F)	YDS5158ST13V1-N(F)
Frequency Range	5150-5850 MHZ	5150-5850 MHZ	5150-5850 MHZ	5150-5850 MHZ
Polarization	Vertical	Vertical	Vertical	Vertical
Gain	16 dBi	17 dBi	17 dBi	13 dBi
Horizontal Beamwidth	90 °	90 °	90 °	120 °
Vertical Beamwidth	7.5 °	6.5 °	7 °	15 °
Front-to-back ratio	≥22 dB	≥22 dB	≥25 dB	≥20 dB
Nominal Impedance	50 Ohms	50 Ohms	50 Ohms	50 Ohms
VSWR	≤ 2	≤ 2	≤ 2	≤ 2
Maximum Power	50 Watts	50 Watts	50 Watts	50 Watts
Lightning protection	DC ground	DC ground	DC ground	DC ground
Connector	N Female	N Female	N Female	N Female
Dimensions	400×128×56 mm	500×128×56 mm	454×137×30 mm	230×128×56 mm
Weight	1.3 kg	1.6 kg	0.8 kg	1.2 kg
Reflector	UPVC	UPVC	ABS	UPVC
Colour	gray	gray	White	gray
Adjustable Angle	0 ~ 15 °	0 ~ 15 °	0 ~ 30 °	0 ~ 15 °
Operating temperature	-40 ~ 60 °C	-40 ~ 60 °C	-40 ~ 60 °C	-40 ~ 60 °C
Wind Load	60 m/s	60 m/s	60 m/s	60 m/s
Mast Mount Diameter	35-75 mm	35-75 mm	35-60 mm	35-75 mm

[www.YDSCOMM.com](http://www.YDSCOMM.com) [sales@ydscomm.com](mailto:sales@ydscomm.com) Tel: (+86) 13790087202 (WeChat, QQ, Mobile)

All rights reserved @ YingDeShun Co. Ltd. (YDS Communications). Specifications subject to change without notice.

# YDS COMMUNICATIONS ANTENNA

Professional Design Engineering Manufacturer Partner



Antenna Model No.	YDS5158ST15V1B-N(F)	YDS5158ST16V1C-N(F)	YDS850ST12X2-2N(F)	YDS850ST12V1-N(F)
Frequency Range	5150-5850 MHZ	5150-5850 MHZ	806-896 MHZ	806-896 MHZ
Polarization	Vertical	Vertical	±45°	Vertical
Gain	15 dBi	16 dBi	12 dBi	12 dBi
Horizontal Beamwidth	120 °	120 °	65 °	65 °
Vertical Beamwidth	7.5 °	7.5 °	28 °	28 °
Front-to-back ratio	≥20 dB	≥20 dB	≥25 dB	≥25 dB
Isolation			≥28 dB	
Nominal Impedance	50 Ohms	50 Ohms	50 Ohms	50 Ohms
VSWR	≤ 2	≤ 2	≤ 1.5	≤ 1.5
Maximum Power	50 Watts	50 Watts	300 Watts	300 Watts
Lightning protection	DC ground	DC ground	DC ground	DC ground
Connector	N Female	N Female	2×N Female	N Female
Dimensions	400×128×56 mm	400×128×56 mm	650×280×125 mm	650×280×125 mm
Weight	1.4 kg	1.4 kg	5.5 kg	5.5 kg
Reflector	UPVC	UPVC	UPVC	UPVC
Colour	gray	gray	gray	gray
Adjustable Angle	0 ~ 15 °	0 ~ 15 °	0 ~ 10 °	0 ~ 10 °
Operating temperature	-40 ~ 60 °C	-40 ~ 60 °C	-40 ~ 60 °C	-40 ~ 60 °C
Wind Load	60 m/s	60 m/s	60 m/s	60 m/s
Mast Mount Diameter	35-75 mm	35-75 mm	50-75 mm	50-75 mm

[www.YDSCOMM.com](http://www.YDSCOMM.com) [sales@ydscomm.com](mailto:sales@ydscomm.com) Tel: (+86) 13790087202 (WeChat, QQ, Mobile)

All rights reserved @ YingDeShun Co. Ltd. (YDS Communications). Specifications subject to change without notice.

# YDS COMMUNICATIONS ANTENNA

Professional Design Engineering Manufacturer Partner



Antenna Model No.	YDS0809ST12X2B-2N(F)	YDS0809ST12X2C-2N(F)	YDS900ST12V1-N(F)	YDS0809ST12X4-4N(F)
Frequency Range	820-896 / 870-960 MHz	820-896 / 870-960 MHz	870-960 MHz	806-824 / 824-960 MHz
Polarization	$\pm 45^\circ$	$\pm 45^\circ$	Vertical	$\pm 45^\circ$
Gain	12 dBi	14.5 dBi / 15 dBi	12 dBi	11.5 dBi / 12 dBi
Horizontal Beamwidth	$68^\circ / 65^\circ$	$68^\circ / 65^\circ$	$65^\circ$	$68^\circ / 65^\circ$
Vertical Beamwidth	$30^\circ / 28^\circ$	$15^\circ / 14^\circ$	$28^\circ$	$32^\circ / 30^\circ$
Front-to-back ratio	$\geq 25$ dB	$\geq 25$ dB	$\geq 25$ dB	$\geq 25$ dB
Isolation	$\geq 28$ dB	$\geq 28$ dB		$\geq 28$ dB
Nominal Impedance	50 Ohms	50 Ohms	50 Ohms	50 Ohms
VSWR	$\leq 1.5$	$\leq 1.5$	$\leq 1.5$	$\leq 1.8 / \leq 1.5$
Maximum Power	300 Watts	300 Watts	300 Watts	200 Watts
Lightning protection	DC ground	DC ground	DC ground	DC ground
Connector	2×N Female	2×N Female	N Female	4×N Female
Dimensions	650×280×85 mm	1270×280×85 mm	650×280×125 mm	1150×280×125 mm
Weight	5.5 kg	9 kg	5.5 kg	9 kg
Reflector	UPVC	UPVC	UPVC	UPVC
Colour	gray	gray	gray	gray
Adjustable Angle	$0 \sim 10^\circ$	$0 \sim 10^\circ$	$0 \sim 10^\circ$	$0 \sim 15^\circ$
Operating temperature	$-40 \sim 60^\circ\text{C}$	$-40 \sim 60^\circ\text{C}$	$-40 \sim 60^\circ\text{C}$	$-40 \sim 60^\circ\text{C}$
Wind Load	60 m/s	60 m/s	60 m/s	60 m/s
Mast Mount Diameter	50-75 mm	50-75 mm	50-75 mm	50-75 mm

[www.YDSCOMM.com](http://www.YDSCOMM.com) [sales@ydscomm.com](mailto:sales@ydscomm.com) Tel: (+86) 13790087202 (WeChat, QQ, Mobile)

All rights reserved @ YingDeShun Co. Ltd. (YDS Communications). Specifications subject to change without notice.



Antenna Model No.	YDS230ST7V1-N(F)	YDS360ST6X2-2N(F)	YDS410ST7.5X2-2N(F)	YDS410ST10.5X2-2N(F)
Frequency Range	223-235 MHz	340-380 MHz	380-450 MHz	380-450 MHz
Polarization	Vertical	±45°	±45°	±45°
Gain	7 dBi	6 dBi	7.5 dBi	10.5 dBi
Horizontal Beamwidth	120 °	100 °	90 °	90 °
Vertical Beamwidth	60 °	60 °	60 °	35 °
Front-to-back ratio	≥25 dB	≥18 dB	≥20 dB	≥20 dB
Isolation		≥20 dB	≥20 dB	≥20 dB
Nominal Impedance	50 Ohms	50 Ohms	50 Ohms	50 Ohms
VSWR	≤ 2	≤ 2	≤ 2	≤ 2
Maximum Power	200 Watts	200 Watts	200 Watts	200 Watts
Lightning protection				
Connector	N Female	2×N Female	2×N Female	2×N Female
Dimensions	1050×300×146 mm	450×300×146 mm	450×300×146 mm	1050×300×146 mm
Weight	8 kg	4 kg	4 kg	8 kg
Reflector	UPVC	UPVC	UPVC	UPVC
Colour	gray	gray	gray	gray
Adjustable Angle	0 ~ 10 °	0 ~ 10 °	0 ~ 10 °	0 ~ 10 °
Operating temperature	-40 ~ 60 °C	-40 ~ 60 °C	-40 ~ 60 °C	-40 ~ 60 °C
Wind Load	60 m/s	60 m/s	60 m/s	60 m/s
Mast Mount Diameter	50-75 mm	50-75 mm	50-75 mm	50-75 mm

# YDS COMMUNICATIONS ANTENNA

Professional Design Engineering Manufacturer Partner



Antenna Model No.	YDS410ST13X2-2N(F)	YDS410ST13.5X2-2N(F)	YDS440ST11V1-N(F)	YDS410ST7.5V1-N(F)
Frequency Range	380-450 MHz	380-450 MHz	400-480 MHz	380-450 MHz
Polarization	$\pm 45^\circ$	$\pm 45^\circ$	Vertical	Vertical
Gain	13 dBi	13.5 dBi	11 dBi	7.5 dBi
Horizontal Beamwidth	90 °	90 °	90 °	100 °
Vertical Beamwidth	22 °	16 °	30 °	60 °
Front-to-back ratio	$\geq 20$ dB	$\geq 20$ dB	$\geq 20$ dB	$\geq 20$ dB
Isolation	$\geq 20$ dB	$\geq 20$ dB		
Nominal Impedance	50 Ohms	50 Ohms	50 Ohms	50 Ohms
VSWR	$\leq 2$	$\leq 2$	$\leq 2$	$\leq 2$
Maximum Power	200 Watts	200 Watts	200 Watts	200 Watts
Connector	2×N Female	2×N Female	N Female	N Female
Dimensions	1650×300×146 mm	2100×300×146 mm	1050×300×146 mm	450×300×146 mm
Weight	11 kg	14 kg	8 kg	4 kg
Reflector	UPVC	UPVC	UPVC	UPVC
Colour	gray	gray	gray	gray
Adjustable Angle	0 ~ 10 °	0 ~ 10 °	0 ~ 10 °	0 ~ 10 °
Operating temperature	-40 ~ 60 °C	-40 ~ 60 °C	-40 ~ 60 °C	-40 ~ 60 °C
Wind Load	60 m/s	60 m/s	60 m/s	60 m/s
Mast Mount Diameter	50-75 mm	50-75 mm	50-75 mm	50-75 mm

[www.YDSCOMM.com](http://www.YDSCOMM.com) [sales@ydscomm.com](mailto:sales@ydscomm.com) Tel: (+86) 13790087202 (WeChat, QQ, Mobile)

All rights reserved @ YingDeShun Co. Ltd. (YDS Communications). Specifications subject to change without notice.



# YDS COMMUNICATIONS ANTENNA

Professional Design Engineering Manufacturer Partner



Antenna Model No.	YDS410ST10.5V1-N(F)	YDS585ST11X2-2N(F)	YDS560ST8X2-2N(F)	YDS560ST11X2-2N(F)
Frequency Range	380-450 MHz	585±10 MHz	470-650 MHz	470-650 MHz
Polarization	Vertical	±45°	±45°	±45°
Gain	10.5 dBi	11 dBi	8 dBi	11 dBi
Horizontal Beamwidth	100 °	65 °	80 °	80 °
Vertical Beamwidth	35 °	35 °	70 °	30 °
Front-to-back ratio	≥20 dB	≥20 dB	≥15 dB	≥20 dB
Isolation		≥28 dB	≥20 dB	≥20 dB
Nominal Impedance	50 Ohms	50 Ohms	50 Ohms	50 Ohms
VSWR	≤ 2	≤ 1.5	≤ 1.5	≤ 1.5
Maximum Power	200 Watts	200 Watts	100 Watts	100 Watts
Connector	N Female	2×N Female	2×N Female	2×N Female
Dimensions	1050×300×146 mm	800×320×80 mm	400×300×146 mm	830×300×146 mm
Weight	8 kg	8 kg	4 kg	7.5 kg
Reflector	UPVC	UPVC	UPVC	UPVC
Colour	gray	gray	gray	gray
Adjustable Angle	0 ~ 10 °	0 ~ 15 °	0 ~ 15 °	0 ~ 10 °
Operating temperature	-40 ~ 60 °C	-40 ~ 60 °C	-40 ~ 60 °C	-40 ~ 60 °C
Wind Load	60 m/s	60 m/s	60 m/s	60 m/s
Mast Mount Diameter	50-75 mm	50-75 mm	50-75 mm	50-75 mm

[www.YDSCOMM.com](http://www.YDSCOMM.com) [sales@ydscomm.com](mailto:sales@ydscomm.com) Tel: (+86) 13790087202 (WeChat, QQ, Mobile)

All rights reserved @ YingDeShun Co. Ltd. (YDS Communications). Specifications subject to change without notice.



Antenna Model No.	YDS560ST12X2-2N(F)	YDS600ST14X2-2N(F)	YDS600ST13.5X2-2N(F)	YDS560ST13.5X2-2N(F)
Frequency Range	470-650 MHz	566-626 MHz	566-626 MHz	470-650 MHz
Polarization	±45°	±45°	±45°	±45°
Gain	12 dBi	14 dBi	13.5 dBi	13.5 dBi
Horizontal Beamwidth	80 °	90 °	90 °	90 °
Vertical Beamwidth	20 °	14 °	15 °	15 °
Front-to-back ratio	≥15 dB	≥15 dB	≥15 dB	≥15 dB
Isolation	≥20 dB	≥20 dB	≥20 dB	≥20 dB
Nominal Impedance	50 Ohms	50 Ohms	50 Ohms	50 Ohms
VSWR	≤ 1.5	≤ 1.5	≤ 1.5	≤ 1.5
Maximum Power	100 Watts	200 Watts	100 Watts	100 Watts
Connector	2×N Female	2×N Female	2×N Female	2×N Female
Dimensions	1260×300×146 mm	2000×300×146 mm	1650×300×146 mm	1650×300×146 mm
Weight	10 kg	14 kg	11 kg	11 kg
Reflector	UPVC	UPVC	UPVC	UPVC
Colour	gray	gray	gray	gray
Adjustable Angle	0 ~ 10 °	0 ~ 10 °	0 ~ 10 °	0 ~ 10 °
Operating temperature	-40 ~ 60 °C	-40 ~ 60 °C	-40 ~ 60 °C	-40 ~ 60 °C
Wind Load	60 m/s	60 m/s	60 m/s	60 m/s
Mast Mount Diameter	50-75 mm	50-75 mm	50-75 mm	50-75 mm



Antenna Model No.	YDS560ST8V1-N(F)	YDS520ST11V1-N(F)	YDS580ST11V1-N(F)	YDS560ST11V1-N(F)
Frequency Range	470-650 MHZ	460-590 MHZ	468-700 MHZ	470-650 MHZ
Polarization	Vertical	Vertical	Vertical	Vertical
Gain	8 dBi	11 dBi	11 dBi	11 dBi
Horizontal Beamwidth	90 °	90 °	90 °	90 °
Vertical Beamwidth	60 °	30 °	30 °	30 °
Front-to-back ratio	≥18 dB	≥20 dB	≥20 dB	≥20 dB
Nominal Impedance	50 Ohms	50 Ohms	50 Ohms	50 Ohms
VSWR	≤ 1.6	≤ 1.5	≤ 1.5	≤ 1.5
Maximum Power	200 Watts	200 Watts	200 Watts	200 Watts
Lightning protection		DC ground	DC ground	DC ground
Connector	N Female	N Female	N Female	N Female
Dimensions	400×300×146 mm	830×300×146 mm	830×300×146 mm	830×300×146 mm
Weight	2 kg	7 kg	7 kg	7 kg
Reflector	UPVC	UPVC	UPVC	UPVC
Colour	gray	gray	gray	gray
Adjustable Angle	0 ~ 20 °	0 ~ 10 °	0 ~ 10 °	0 ~ 10 °
Operating temperature	-40 ~ 60 °C	-40 ~ 60 °C	-40 ~ 60 °C	-40 ~ 60 °C
Wind Load	60 m/s	60 m/s	60 m/s	60 m/s
Mast Mount Diameter	50-75 mm	50-75 mm	50-75 mm	50-75 mm

# YDS COMMUNICATIONS ANTENNA

Professional Design Engineering Manufacturer Partner



Antenna Model No.	YDS560ST14V1-N(F)	YDS640ST12X2-2N(F)	YDS600ST11X2-2N(F)	YDS610ST11X2-2N(F)
Frequency Range	470-650 MHZ	606-678 MHZ	542-678 MHZ	566-678 MHZ
Polarization	Vertical	±45°	±45°	±45°
Gain	14 dBi	12 dBi	11 dBi	11 dBi
Horizontal Beamwidth	90 °	65 °	80 °	80 °
Vertical Beamwidth	16 °	30 °	30 °	30 °
Front-to-back ratio	≥20 dB	≥25 dB	≥20 dB	≥15 dB
Isolation		≥28 dB	≥20 dB	≥22 dB
Nominal Impedance	50 Ohms	50 Ohms	50 Ohms	50 Ohms
VSWR	≤ 1.5	≤ 1.5	≤ 1.8	≤ 1.5
Maximum Power	200 Watts	200 Watts	100 Watts	100 Watts
Lightning protection	DC ground	DC ground		
Connector	N Female	2×N Female	2×N Female	2×N Female
Dimensions	1650×300×146 mm	800×320×80 mm	830×300×146 mm	830×300×146 mm
Weight	11 kg	8 kg	7.5 kg	7.5 kg
Reflector	UPVC	UPVC	UPVC	UPVC
Colour	gray	gray	gray	gray
Adjustable Angle	0 ~ 10 °	0 ~ 15 °	0 ~ 10 °	0 ~ 10 °
Operating temperature	-40 ~ 60 °C	-40 ~ 60 °C	-40 ~ 60 °C	-40 ~ 60 °C
Wind Load	60 m/s	60 m/s	60 m/s	60 m/s
Mast Mount Diameter	50-75 mm	35-75 mm	50-75 mm	50-75 mm

[www.YDSCOMM.com](http://www.YDSCOMM.com) [sales@ydscomm.com](mailto:sales@ydscomm.com) Tel: (+86) 13790087202 (WeChat, QQ, Mobile)

All rights reserved @ YingDeShun Co. Ltd. (YDS Communications). Specifications subject to change without notice.



Antenna Model No.	YDS610ST11V1-N(F)	YDS750ST12X2-2N(F)	YDS750ST15X2-2N(F)	YDS750ST12V1-N(F)
Frequency Range	566-678 MHZ	703-803 MHZ	703-803 MHZ	690-820 MHZ
Polarization	Vertical	±45°	±45°	Vertical
Gain	11 dBi	12 dBi	15 dBi	12 dBi
Horizontal Beamwidth	90 °	65 °	65 °	65 °
Vertical Beamwidth	30 °	30 °	15 °	30 °
Front-to-back ratio	≥20 dB	≥25 dB	≥25 dB	≥20 dB
Isolation		≥28 dB	≥28 dB	
Nominal Impedance	50 Ohms	50 Ohms	50 Ohms	50 Ohms
VSWR	≤ 1.5	≤ 1.5	≤ 1.5	≤ 1.8
Maximum Power	200 Watts	200 Watts	200 Watts	200 Watts
Lightning protection	DC ground			
Connector	N Female	2×N Female	2×N Female	N Female
Dimensions	830×300×146 mm	750×280×125 mm	1420×280×125 mm	800×280×125 mm
Weight	7 kg	8 kg	12 kg	7 kg
Reflector	UPVC	UPVC	UPVC	UPVC
Colour	gray	gray	gray	gray
Adjustable Angle	0 ~ 10 °	0 ~ 15 °	0 ~ 10 °	0 ~ 15 °
Operating temperature	-40 ~ 60 °C	-40 ~ 60 °C	-40 ~ 60 °C	-40 ~ 60 °C
Wind Load	60 m/s	60 m/s	60 m/s	60 m/s
Mast Mount Diameter	50-75 mm	35-75 mm	35-75 mm	50-75 mm

[www.YDSCOMM.com](http://www.YDSCOMM.com) [sales@ydscomm.com](mailto:sales@ydscomm.com) Tel: (+86) 13790087202 (WeChat, QQ, Mobile)



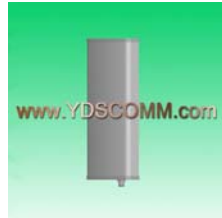
Antenna Model No.	YDS750ST12V1B-N(F)	YDS720ST8V1-N(F)	YDS720ST11V1-N(F)	YDS810ST14V1-N(F)
Frequency Range	690-820 MHZ	650-800 MHZ	720 MHZ	790-840 MHZ
Polarization	Vertical	Vertical	Vertical	Vertical
Gain	12 dBi	8 dBi	11 dBi	14 dBi
Horizontal Beamwidth	70 °	90 °	90 °	65 °
Vertical Beamwidth	30 °	60 °	32 °	16 °
Front-to-back ratio	≥20 dB	≥20 dB	≥20 dB	≥22 dB
Nominal Impedance	50 Ohms	50 Ohms	50 Ohms	50 Ohms
VSWR	≤ 1.8	≤ 1.5	≤ 1.5	≤ 1.5
Maximum Power	200 Watts	200 Watts	200 Watts	100 Watts
Lightning protection			DC ground	DC ground
Connector	N Female	N Female	N Female	N Female
Dimensions	800×280×125 mm	300×280×125 mm	800×320×80 mm	1150×280×125 mm
Weight	7 kg	2 kg	7 kg	8.5 kg
Reflector	UPVC	UPVC	UPVC	UPVC
Colour	gray	gray	gray	gray
Adjustable Angle	0 ~ 15 °	0 ~ 15 °	0 ~ 15 °	0 ~ 10 °
Operating temperature	-40 ~ 60 °C	-40 ~ 60 °C	-40 ~ 60 °C	-40 ~ 60 °C
Wind Load	60 m/s	60 m/s	60 m/s	60 m/s
Mast Mount Diameter	50-75 mm	50-75 mm	50-75 mm	50-75 mm



Antenna Model No.	YDS750ST12V1B-N(F)	YDS720ST8V1-N(F)	YDS720ST11V1-N(F)	YDS810ST14V1-N(F)
Frequency Range	690-820 MHZ	650-800 MHZ	720 MHZ	790-840 MHZ
Polarization	Vertical	Vertical	Vertical	Vertical
Gain	12 dBi	8 dBi	11 dBi	14 dBi
Horizontal Beamwidth	70 °	90 °	90 °	65 °
Vertical Beamwidth	30 °	60 °	32 °	16 °
Front-to-back ratio	≥20 dB	≥20 dB	≥20 dB	≥22 dB
Nominal Impedance	50 Ohms	50 Ohms	50 Ohms	50 Ohms
VSWR	≤ 1.8	≤ 1.5	≤ 1.5	≤ 1.5
Maximum Power	200 Watts	200 Watts	200 Watts	100 Watts
Lightning protection			DC ground	DC ground
Connector	N Female	N Female	N Female	N Female
Dimensions	800×280×125 mm	300×280×125 mm	800×320×80 mm	1150×280×125 mm
Weight	7 kg	2 kg	7 kg	8.5 kg
Reflector	UPVC	UPVC	UPVC	UPVC
Colour	gray	gray	gray	gray
Adjustable Angle	0 ~ 15 °	0 ~ 15 °	0 ~ 15 °	0 ~ 10 °
Operating temperature	-40 ~ 60 °C	-40 ~ 60 °C	-40 ~ 60 °C	-40 ~ 60 °C
Wind Load	60 m/s	60 m/s	60 m/s	60 m/s
Mast Mount Diameter	50-75 mm	50-75 mm	50-75 mm	50-75 mm

# YDS COMMUNICATIONS ANTENNA

Professional Design Engineering Manufacturer Partner



Antenna Model No.	YDS830ST15V1-N(F)	YDS890ST15V1-N(F)	YDS910ST10X2-2N(F)	YDS0809ST12X2-2N(F)
Frequency Range	806-866 MHz	820-960 MHz	870-960 MHz	820-896 / 870-960 MHz
Polarization	Vertical	Vertical	±45°	±45°
Gain	15 dBi	15 dBi	10 dBi	12 dBi
Horizontal Beamwidth	65 °	33 °	65 °	68 ° / 65 °
Vertical Beamwidth	14 °	28 °	55 °	30 ° / 28 °
Front-to-back ratio	≥25 dB	≥25 dB	≥20 dB	≥25 dB
Isolation			≥26 dB	≥28 dB
Nominal Impedance	50 Ohms	50 Ohms	50 Ohms	50 Ohms
VSWR	≤ 1.5	≤ 1.5	≤ 1.5	≤ 1.5
Maximum Power	100 Watts	200 Watts	200 Watts	300 Watts
Lightning protection	DC ground	DC ground	DC ground	DC ground
Connector	N Female	N Female	2×N Female	2×N Female
Dimensions	1150×280×125 mm	650×515×100 mm	320×280×125 mm	650×280×125 mm
Weight	8.5 kg	10 kg	2 kg	5.5 kg
Reflector	UPVC	UPVC	PVC	UPVC
Colour	gray	gray	gray	gray
Adjustable Angle	0 ~ 10 °	0 ~ 10 °	0 ~ 15 °	0 ~ 10 °
Operating temperature	-40 ~ 60 °C	-40 ~ 60 °C	-55 ~ 60 °C	-40 ~ 60 °C
Wind Load	60 m/s	60 m/s	60 m/s	60 m/s
Mast Mount Diameter	50-75 mm	50-75 mm	40-70 mm	50-75 mm

[www.YDSCOMM.com](http://www.YDSCOMM.com) [sales@ydscomm.com](mailto:sales@ydscomm.com) Tel: (+86) 13790087202 (WeChat, QQ, Mobile)

All rights reserved @ YingDeShun Co. Ltd. (YDS Communications). Specifications subject to change without notice.



# YDS COMMUNICATIONS ANTENNA

Professional Design Engineering Manufacturer Partner



Antenna Model No.	YDS1415ST10.5V1-SMAK	YDS1414ST14V1-N(F)	YDS1718ST16V1-N(F)	YDS1721ST12X2-2N(F)
Frequency Range	1429-1525 MHZ	1428-1448 MHZ	1785-1805 MHZ	1710-2170 MHZ
Polarization	Vertical	Vertical	Vertical	±45°
Gain	10.5 dBi	14 dBi	16 dBi	12 dBi
Horizontal Beamwidth	80 °	120 °	65 °	65 °
Vertical Beamwidth	30 °	10 °	10 °	30 °
Front-to-back ratio	≥20 dB	≥18 dB	≥25 dB	≥23 dB
Isolation				≥25 dB
Nominal Impedance	50 Ohms	50 Ohms	50 Ohms	50 Ohms
VSWR	≤ 2.5	≤ 1.5	≤ 1.5	≤ 1.5
Maximum Power	100 Watts	200 Watts	300 Watts	200 Watts
Lightning protection	DC ground	DC ground	DC ground	DC ground
Connector	SMAK	N Female	N Female	2×N Female
Dimensions	325×128×56 mm	970×160×80 mm	800×160×80 mm	250×160×80 mm
Weight	1.5 kg	4 kg	3 kg	2 kg
Reflector	UPVC	UPVC	UPVC	UPVC
Colour	gray	gray	gray	gray
Adjustable Angle	0 ~ 15 °	0 ~ 15 °	0 ~ 15 °	0 ~ 15 °
Operating temperature	-40 ~ 60 °C	-40 ~ 60 °C	-40 ~ 60 °C	-40 ~ 60 °C
Wind Load	60 m/s	60 m/s	60 m/s	60 m/s
Mast Mount Diameter	35-75 mm	35-75 mm	35-75 mm	35-75 mm

[www.YDSCOMM.com](http://www.YDSCOMM.com) [sales@ydscomm.com](mailto:sales@ydscomm.com) Tel: (+86) 13790087202 (WeChat, QQ, Mobile)

All rights reserved @ YingDeShun Co. Ltd. (YDS Communications). Specifications subject to change without notice.

# YDS COMMUNICATIONS ANTENNA

Professional Design Engineering Manufacturer Partner



Antenna Model No.	YDS3742ST17V1-N(F)	YDS5758ST18V1-N(F)	YDS610ST12X2-2N(F)	YDS610ST15X2-2N(F)
Frequency Range	3700-4200 MHZ	5725-5850 MHZ	566-678 MHZ	566-678 MHZ
Polarization	Vertical	Vertical	±45°	±45°
Gain	17 dBi	18 dBi	12 dBi	15 dBi
Horizontal Beamwidth	30 °	60 °	65 °	65 °
Vertical Beamwidth	13 °	6.5 °	30 °	15 °
Front-to-back ratio	≥25 dB	≥25 dB	≥25 dB	≥25 dB
Isolation			≥25 dB	≥25 dB
Nominal Impedance	50 Ohms	50 Ohms	50 Ohms	50 Ohms
VSWR	≤ 1.5	≤ 1.5	≤ 1.6	≤ 1.6
Maximum Power	200 Watts	50 Watts	200 Watts	200 Watts
Lightning protection		DC ground	DC ground	DC ground
Connector	N Female	N Female	2×N Female	2×N Female
Dimensions	280×128×56 mm	500×128×56 mm	830×300×146 mm	1650×300×146 mm
Weight	1.1 kg	1.3 kg	8 kg	11 kg
Reflector	UPVC	UPVC	UPVC	UPVC
Colour	gray	gray	gray	gray
Adjustable Angle	0 ~ 15 °	0 ~ 15 °	0 ~ 15 °	0 ~ 10 °
Operating temperature	-40 ~ 60 °C	-40 ~ 60 °C	-40 ~ 60 °C	-40 ~ 60 °C
Wind Load	60 m/s	60 m/s	60 m/s	60 m/s
Mast Mount Diameter	35-75 mm	35-75 mm	35-75 mm	35-75 mm

[www.YDSCOMM.com](http://www.YDSCOMM.com) [sales@ydscomm.com](mailto:sales@ydscomm.com) Tel: (+86) 13790087202 (WeChat, QQ, Mobile)

All rights reserved @ YingDeShun Co. Ltd. (YDS Communications). Specifications subject to change without notice.

# YDS COMMUNICATIONS ANTENNA

Professional Design Engineering Manufacturer Partner



Antenna Model No.	YDS0825ST1214.5V1-N(F)	YDS0826ST8.5X2-2N(F)	YDS0826ST1215X4-4N(F)	YDS0826ST12X4-4N(F)
Frequency Range	824-960 / 1710-2500 MHZ	824-960 / 1710-2690 MHZ	824-960 / 1710-2690 MHZ	824-960 / 1710-2690 MHZ
Polarization	Vertical	±45°	±45°	±45° / ±45°
Gain	12 dBi / 14.5 dBi	8 dBi / 8.5 dBi	12 dBi / 15 dBi	12 dBi / 12 dBi
Horizontal Beamwidth	65° / 65°	65° / 60°	65° / 65°	65° / 65°
Vertical Beamwidth	30° / 15°	60° / 55°	30° / 15°	30° / 30°
Front-to-back ratio	≥20 dB / ≥25 dB	≥25 dB / ≥25 dB	≥20 dB / ≥25 dB	≥20 dB / ≥25 dB
Isolation		≥25 dB / ≥25 dB	≥25 dB / ≥25 dB	≥25 dB / ≥25 dB
Nominal Impedance	50 Ohms	50 Ohms	50 Ohms	50 Ohms
VSWR	≤ 1.5 / ≤ 1.7	≤ 1.7 / ≤ 1.7	≤ 1.5 / ≤ 1.7	≤ 1.5 / ≤ 1.7
Maximum Power	200 Watts	200 Watts	200 Watts	200 Watts
Lightning protection	DC ground	DC ground	DC ground	DC ground
Connector	N Female	2×N Female / 2×N Female	4×N Female	N Female / 3×N Female
Dimensions	580×320×80 mm	320×280×125 mm	650×280×125 mm	650×280×125 mm
Weight	5 kg	2 kg	5 kg	5 kg
Reflector	UPVC	UPVC	UPVC	UPVC
Colour	gray	gray	gray	gray
Adjustable Angle	0 ~ 10°	0 ~ 20°	0 ~ 10°	0 ~ 10°
Operating temperature	-40 ~ 60 °C	-40 ~ 60 °C	-40 ~ 60 °C	-40 ~ 60 °C
Wind Load	60 m/s	60 m/s	60 m/s	60 m/s
Mast Mount Diameter	40-70 mm	40-70 mm	40-70 mm	40-70 mm

[www.YDSCOMM.com](http://www.YDSCOMM.com) [sales@ydscomm.com](mailto:sales@ydscomm.com) Tel: (+86) 13790087202 (WeChat, QQ, Mobile)

All rights reserved @ YingDeShun Co. Ltd. (YDS Communications). Specifications subject to change without notice.

# YDS COMMUNICATIONS ANTENNA

Professional Design Engineering Manufacturer Partner



Antenna Model No.	YDS0826ST1517X4-4N(F)	YDS0826ST911.5X2-2N(F)	YDS0826ST8X2-2N(F)	YDS0826ST8X2B-2N(F)
Frequency Range	824-960 / 1710-2690 MHZ	824-960 / 1710-2690 MHZ	800-960 / 1710-2690 MHZ	880-960 / 1710-2690 MHZ
Polarization	±45°	±45°	±45°	±45°
Gain	15 dBi / 17 dBi	9 dBi / 11.5 dBi	8 dBi / 8.5 dBi	8 dBi / 8.5 dBi
Horizontal Beamwidth	65 ° / 65 °	65 ° / 65 °	65 ° / 60 °	65 ° / 60 °
Vertical Beamwidth	15 ° / 7.5 °	30 ° / 35 °	60 ° / 55 °	60 ° / 55 °
Front-to-back ratio	≥20 dB / ≥25 dB	≥20 dB / ≥25 dB	≥25 dB / ≥25 dB	≥25 dB / ≥25 dB
Isolation	≥25 dB / ≥25 dB	≥25 dB / ≥25 dB	≥25 dB / ≥25 dB	≥25 dB / ≥25 dB
Nominal Impedance	50 Ohms	50 Ohms	50 Ohms	50 Ohms
VSWR	≤ 1.5 / ≤ 1.7	≤ 1.5 / ≤ 1.7	≤ 1.5 / ≤ 1.5	≤ 1.5 / ≤ 1.7
Maximum Power	200 Watts	200 Watts	200 Watts	200 Watts
Lightning protection	DC ground	DC ground	DC ground	DC ground
Connector	4×N Female	2×N Female	2×N Female	2×N Female
Dimensions	1150×280×125 mm	350×320×80 mm	320×280×125 mm	320×280×125 mm
Weight	9 kg	3.5 kg	2 kg	2 kg
Reflector	UPVC	UPVC	PVC	PVC
Colour	gray	gray	gray	gray
Adjustable Angle	0 ~ 10 °	0 ~ 10 °	0 ~ 20 °	0 ~ 20 °
Operating temperature	-40 ~ 60 °C	-40 ~ 60 °C	-40 ~ 60 °C	-40 ~ 60 °C
Wind Load	60 m/s	60 m/s	60 m/s	60 m/s
Mast Mount Diameter	40-70 mm	40-70 mm	40-70 mm	40-70 mm

[www.YDSCOMM.com](http://www.YDSCOMM.com) [sales@ydscomm.com](mailto:sales@ydscomm.com) Tel: (+86) 13790087202 (WeChat, QQ, Mobile)

All rights reserved @ YingDeShun Co. Ltd. (YDS Communications). Specifications subject to change without notice.

# YDS COMMUNICATIONS ANTENNA

Professional Design Engineering Manufacturer Partner



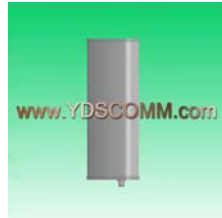
Antenna Model No.	YDS0826ST1214.5X2-2N(F)	YDS0826ST1214.5X2B-2N(F)	YDS0826ST14.516.5X2-2N(F)	YDS0826ST911.5V1-N(F)
Frequency Range	824-960 / 1710-2690 MHZ	824-960 / 1710-2690 MHZ	824-960 / 1710-2690 MHZ	824-960 / 1710-2690 MHZ
Polarization	±45°	±45°	±45°	Vertical
Gain	12 dBi / 14.5 dBi	12 dBi / 14.5 dBi	14.5 dBi / 16.5 dBi	9 dBi / 11.5 dBi
Horizontal Beamwidth	65 ° / 65 °	65 ° / 65 °	65 ° / 65 °	68 ° / 65 °
Vertical Beamwidth	30 ° / 15 °	30 ° / 15 °	15 ° / 7.5 °	60 ° / 30 °
Front-to-back ratio	≥20 dB / ≥25 dB	≥20 dB / ≥25 dB	≥20 dB / ≥25 dB	≥20 dB / ≥25 dB
Isolation	≥25 dB / ≥25 dB	≥25 dB / ≥25 dB	≥25 dB / ≥25 dB	
Nominal Impedance	50 Ohms	50 Ohms	50 Ohms	50 Ohms
VSWR	≤ 1.5 / ≤ 1.7	≤ 1.5 / ≤ 1.7	≤ 1.5 / ≤ 1.7	≤ 1.6 / ≤ 1.8
Maximum Power	200 Watts	200 Watts	200 Watts	200 Watts
Lightning protection	DC ground	DC ground	DC ground	DC ground
Connector	2×N Female	2×N Female	2×N Female	N Female
Dimensions	580×320×80 mm	650×280×125 mm	1150×280×125 mm	350×320×80 mm
Weight	5 kg	5 kg	9 kg	3.5 kg
Reflector	UPVC	UPVC	UPVC	UPVC
Colour	gray	gray	gray	gray
Adjustable Angle	0 ~ 10 °	0 ~ 10 °	0 ~ 10 °	0 ~ 15 °
Operating temperature	-40 ~ 60 °C	-40 ~ 60 °C	-40 ~ 60 °C	-40 ~ 60 °C
Wind Load	60 m/s	60 m/s	60 m/s	60 m/s
Mast Mount Diameter	40-70 mm	40-70 mm	40-70 mm	40-70 mm

[www.YDSCOMM.com](http://www.YDSCOMM.com) [sales@ydscomm.com](mailto:sales@ydscomm.com) Tel: (+86) 13790087202 (WeChat, QQ, Mobile)

All rights reserved @ YingDeShun Co. Ltd. (YDS Communications). Specifications subject to change without notice.

# YDS COMMUNICATIONS ANTENNA

Professional Design Engineering Manufacturer Partner



Antenna Model No.	YDS0826ST1214.5V1-N(F)	YDS0826ST14.516.5V1-N(F)	YDS0826ST16.5V1-N(F)	YDS2458ST1011V1-N(F)
Frequency Range	824-960 / 1710-2690 MHZ	824-960 / 1710-2690 MHZ	824-960 / 1710-2690 MHZ	2400-2500 / 5150-5850 MHZ
Polarization	Vertical	Vertical	Vertical	Vertical
Gain	12 dBi / 14.5 dBi	14.5 dBi / 16.5 dBi	16.5 dBi / 16.5 dBi	10 dBi / 11 dBi
Horizontal Beamwidth	65 ° / 65 °	65 ° / 65 °	65 ° / 65 °	60 ° / 50 °
Vertical Beamwidth	30 ° / 15 °	15 ° / 7.5 °	7.5 ° / 7.5 °	30 ° / 25 °
Front-to-back ratio	≥20 dB / ≥25 dB	≥20 dB / ≥25 dB	≥20 dB / ≥25 dB	≥25 dB
Nominal Impedance	50 Ohms	50 Ohms	50 Ohms	50 Ohms
VSWR	≤ 1.6 / ≤ 1.8	≤ 1.6 / ≤ 1.8	≤ 1.6 / ≤ 1.8	≤ 2
Maximum Power	200 Watts	200 Watts	200 Watts	50 Watts
Lightning protection	DC ground	DC ground	DC ground	
Connector	N Female	N Female	N Female	N Female
Dimensions	580×320×80 mm	1150×320×80 mm	2270×320×80 mm	230×128×56 mm
Weight	5 kg	9 kg	15 kg	1 kg
Reflector	UPVC	UPVC	UPVC	UPVC
Colour	gray	gray	gray	gray
Adjustable Angle	0 ~ 10 °	0 ~ 10 °	0 ~ 10 °	0 ~ 15 °
Operating temperature	-40 ~ 60 °C	-40 ~ 60 °C	-40 ~ 60 °C	-40 ~ 60 °C
Wind Load	60 m/s	60 m/s	60 m/s	60 m/s
Mast Mount Diameter	40-70 mm	40-70 mm	40-70 mm	35-75 mm

[www.YDSCOMM.com](http://www.YDSCOMM.com) [sales@ydscomm.com](mailto:sales@ydscomm.com) Tel: (+86) 13790087202 (WeChat, QQ, Mobile)

All rights reserved @ YingDeShun Co. Ltd. (YDS Communications). Specifications subject to change without notice.

# YDS COMMUNICATIONS ANTENNA

Professional Design Engineering Manufacturer Partner



Antenna Model No.	YDS2458ST11.515X4-4N(F)	YDS2458ST11.512X4-4N(F)	YDS2458ST14.516.5X4-4N(F)	YDS2458ST17X4-4N(F)
Frequency Range	2400-2500 / 5150-5850 MHZ	2400-2500 / 5150-5850 MHZ	2400-2500 / 5150-5850 MHZ	2400-2500 / 5150-5850 MHZ
Polarization	±45°	±45°	±45°	±45°
Gain	11.5 dBi / 15 dBi	11.5 dBi / 12 dBi	14.5 dBi / 16.5 dBi	16.5 dBi / 17 dBi
Horizontal Beamwidth	65 ° / 65 °	65 ° / 65 °	65 ° / 65 °	65 ° / 65 °
Vertical Beamwidth	30 ° / 12 °	30 ° / 20 °	15 ° / 7.5 °	7.5 ° / 6.5 °
Front-to-back ratio	≥20 dB	≥20 dB	≥20 dB	≥20 dB
Isolation	≥25 dB	≥25 dB	≥25 dB	≥25 dB
Nominal Impedance	50 Ohms	50 Ohms	50 Ohms	50 Ohms
VSWR	≤ 1.5 / ≤ 2	≤ 1.5 / ≤ 2	≤ 1.5 / ≤ 2	≤ 1.7 / ≤ 2
Maximum Power	50 Watts	50 Watts	50 Watts	50 Watts
Lightning protection	DC ground	DC ground	DC ground	DC ground
Connector	4×N Female	4×N Female	4×N Female	4×N Female
Dimensions	250×167×55 mm	250×167×55 mm	500×167×55 mm	850×167×55 mm
Weight	1.3 kg	1.3 kg	2.1 kg	3.5 kg
Reflector	UPVC	UPVC	UPVC	UPVC
Colour	gray	gray	gray	gray
Adjustable Angle	0 ~ 30 °	0 ~ 30 °	0 ~ 15 °	0 ~ 10 °
Operating temperature	-40 ~ 60 °C	-40 ~ 60 °C	-40 ~ 60 °C	-40 ~ 60 °C
Wind Load	60 m/s	60 m/s	60 m/s	60 m/s
Mast Mount Diameter	35-75 mm	35-75 mm	35-75 mm	35-75 mm

[www.YDSCOMM.com](http://www.YDSCOMM.com) [sales@ydscomm.com](mailto:sales@ydscomm.com) Tel: (+86) 13790087202 (WeChat, QQ, Mobile)

All rights reserved @ YingDeShun Co. Ltd. (YDS Communications). Specifications subject to change without notice.

# YDS COMMUNICATIONS ANTENNA

Professional Design Engineering Manufacturer Partner



Antenna Model No.	YDS2458ST14.516.5V1-2N(F)	YDS2458ST11.514.5X2-2N(F)	YDS2458ST14.516.5X2-2N(F)	YDS2458ST14.516V1-N(F)
Frequency Range	2400-2500 / 5150-5850 MHZ	2400-2500 / 5150-5850 MHZ	2400-2500 / 5150-5850 MHZ	2400-2500 / 5150-5850 MHZ
Polarization	Vertical	±45°	±45°	Vertical
Gain	14.5 dBi / 16.5 dBi	11.5 dBi / 14.5 dBi	14.5 dBi / 16.5 dBi	14.5 dBi / 16 dBi
Horizontal Beamwidth	65 ° / 65 °	65 ° / 65 °	65 ° / 65 °	65 ° / 65 °
Vertical Beamwidth	15 ° / 7.5 °	30 ° / 12 °	15 ° / 7.5 °	15 ° / 7.5 °
Front-to-back ratio	≥23 dB	≥20 dB	≥20 dB	≥23 dB
Isolation		≥25 dB	≥25 dB	
Nominal Impedance	50 Ohms	50 Ohms	50 Ohms	50 Ohms
VSWR	≤ 1.5 / ≤ 2	≤ 1.5 / ≤ 2	≤ 2	≤ 2
Maximum Power	50 Watts	50 Watts	50 Watts	50 Watts
Lightning protection	DC ground	DC ground	DC ground	DC ground
Connector	2×N Female	2×N Female	2×N Female	N Female
Dimensions	450×167×55 mm	250×167×55 mm	500×167×55 mm	450×167×55 mm
Weight	2 kg	1.3 kg	2.1 kg	2 kg
Reflector	UPVC	UPVC	UPVC	UPVC
Colour	gray	gray	gray	gray
Adjustable Angle	0 ~ 15 °	0 ~ 30 °	0 ~ 15 °	0 ~ 15 °
Operating temperature	-40 ~ 60 °C	-40 ~ 60 °C	-40 ~ 60 °C	-40 ~ 60 °C
Wind Load	60 m/s	60 m/s	60 m/s	60 m/s
Mast Mount Diameter	35-75 mm	35-75 mm	35-75 mm	35-75 mm

[www.YDSCOMM.com](http://www.YDSCOMM.com) [sales@ydscomm.com](mailto:sales@ydscomm.com) Tel: (+86) 13790087202 (WeChat, QQ, Mobile)

All rights reserved @ YingDeShun Co. Ltd. (YDS Communications). Specifications subject to change without notice.





Antenna Model No.	YDS2425ST14VH-2N(F)	YDS2425ST12VH-2N(F)	YDS2425ST14VHB-2N(F)	YDS2425ST15VH-2N(F)
Frequency Range	2400-2500 MHZ	2400-2500 MHZ	2400-2500 MHZ	2400-2500 MHZ
Polarization	Vertical / Horizontal	Vertical / Horizontal	Vertical / Horizontal	Vertical / Horizontal
Gain	14 dBi	12 dBi	14 dBi	15 dBi
Horizontal Beamwidth	45 °	65 °	65 °	65 °
Vertical Beamwidth	28 °	30 °	20 °	15 °
Front-to-back ratio	≥25 dB	≥25 dB	≥25 dB	≥25 dB
Isolation	≥30 dB	≥30 dB	≥30 dB	≥30 dB
Nominal Impedance	50 Ohms	50 Ohms	50 Ohms	50 Ohms
VSWR	≤ 1.5	≤ 1.5	≤ 1.5	≤ 1.5
Maximum Power	100 Watts	100 Watts	100 Watts	100 Watts
Lightning protection	DC ground	DC ground	DC ground	DC ground
Connector	2×N Female	2×N Female	2×N Female	2×N Female
Dimensions	250×167×55 mm	230×128×56 mm	350×128×56 mm	500×128×56 mm
Weight	1.1 kg	1.1 kg	1.2 kg	1.5 kg
Reflector	UPVC	UPVC	UPVC	UPVC
Colour	gray	gray	gray	gray
Adjustable Angle	0 ~ 15 °	0 ~ 15 °	0 ~ 15 °	0 ~ 15 °
Operating temperature	-40 ~ 60 °C	-40 ~ 60 °C	-40 ~ 60 °C	-40 ~ 60 °C
Wind Load	60 m/s	60 m/s	60 m/s	60 m/s
Mast Mount Diameter	35-75 mm	35-75 mm	35-75 mm	35-75 mm

[www.YDSCOMM.com](http://www.YDSCOMM.com) [sales@ydscomm.com](mailto:sales@ydscomm.com) Tel: (+86) 13790087202 (WeChat, QQ, Mobile)



Antenna Model No.	YDS2425ST15VHB-2N(F)	YDS2425ST15VHC-2N(F)	YDS2425ST17VH-2N(F)	YDS2327ST17VH-2N(F)
Frequency Range	2400-2500 MHZ	2400-2500 MHZ	2400-2500 MHZ	2300-2700 MHZ
Polarization	Vertical / Horizontal	Vertical / Horizontal	Vertical / Horizontal	Vertical / Horizontal
Gain	15 dBi	15 dBi	17 dBi	17 dBi
Horizontal Beamwidth	65 °	65 °	65 °	65 °
Vertical Beamwidth	15 °	15 °	7.5 °	7.5 °
Front-to-back ratio	≥25 dB	≥25 dB	≥25 dB	≥25 dB
Isolation	≥25 dB	≥25 dB	≥30 dB	≥30 dB
Nominal Impedance	50 Ohms	50 Ohms	50 Ohms	50 Ohms
VSWR	≤ 1.5	≤ 1.5	≤ 1.5	≤ 1.77
Maximum Power	100 Watts	100 Watts	100 Watts	100 Watts
Lightning protection	DC ground	DC ground	DC ground	DC ground
Connector	2×N Female	2×N Female	2×N Female	2×N Female
Dimensions	454×137×30 mm	454×137×30 mm	850×128×56 mm	850×128×56 mm
Weight	1.5 kg	1.5 kg	3.2 kg	3.2 kg
Reflector	ABC	ABC	UPVC	UPVC
Colour	White	White	gray	gray
Adjustable Angle	0 ~ 15 °	0 ~ 30 °	0 ~ 12 °	0 ~ 12 °
Operating temperature	-40 ~ 60 °C	-40 ~ 60 °C	-40 ~ 60 °C	-40 ~ 60 °C
Wind Load	60 m/s	60 m/s	60 m/s	60 m/s
Mast Mount Diameter	35-50 mm	35-50 mm	35-75 mm	35-75 mm

[www.YDSCOMM.com](http://www.YDSCOMM.com) [sales@ydscomm.com](mailto:sales@ydscomm.com) Tel: (+86) 13790087202 (WeChat, QQ, Mobile)



Antenna Model No.	YDS2425ST11VH-2N(F)	YDS2327ST14VH-2N(F)	YDS2425ST14VHC-2N(F)	YDS2425ST15VHD-2N(F)
Frequency Range	2400-2500 MHZ	2300-2700 MHZ	2400-2500 MHZ	2400-2500 MHZ
Polarization	Vertical / Horizontal	Vertical / Horizontal	Vertical / Horizontal	Vertical / Horizontal
Gain	11 dBi	14 dBi	14 dBi	15 dBi
Horizontal Beamwidth	90 °	90 °	90 °	90 °
Vertical Beamwidth	30 °	15 °	15 °	10 °
Front-to-back ratio	≥22 dB	≥23 dB	≥23 dB	≥23 dB
Isolation	≥28 dB	≥30 dB	≥30 dB	≥30 dB
Nominal Impedance	50 Ohms	50 Ohms	50 Ohms	50 Ohms
VSWR	≤ 1.5	≤ 1.5	≤ 1.5	≤ 1.5
Maximum Power	100 Watts	100 Watts	100 Watts	100 Watts
Lightning protection	DC ground	DC ground	DC ground	DC ground
Connector	2×N Female	2×N Female	2×N Female	2×N Female
Dimensions	230×128×56 mm	500×128×56 mm	500×128×56 mm	650×128×56 mm
Weight	1.1 kg	1.5 kg	1.5 kg	2.7 kg
Reflector	UPVC	UPVC	UPVC	UPVC
Colour	gray	gray	gray	gray
Adjustable Angle	0 ~ 15 °	0 ~ 15 °	0 ~ 15 °	0 ~ 12 °
Operating temperature	-40 ~ 60 °C	-40 ~ 60 °C	-40 ~ 60 °C	-40 ~ 60 °C
Wind Load	60 m/s	60 m/s	60 m/s	60 m/s
Mast Mount Diameter	35-75 mm	35-75 mm	35-75 mm	35-75 mm

[www.YDSCOMM.com](http://www.YDSCOMM.com) [sales@ydscomm.com](mailto:sales@ydscomm.com) Tel: (+86) 13790087202 (WeChat, QQ, Mobile)



Antenna Model No.	YDS2425ST16VH-2N(F)	YDS2425ST9VH-2N(F)	YDS2425ST12VHB-2N(F)	YDS2425ST14VHD-2N(F)
Frequency Range	2400-2500 MHZ	2400-2500 MHZ	2400-2500 MHZ	2400-2500 MHZ
Polarization	Vertical / Horizontal	Vertical / Horizontal	Vertical / Horizontal	Vertical / Horizontal
Gain	16 dBi	9 dBi	12 dBi	14 dBi
Horizontal Beamwidth	90 °	118 °	118 °	120 °
Vertical Beamwidth	7.5 °	30 °	15 °	10 °
Front-to-back ratio	≥23 dB	≥18 dB	≥18 dB	≥18 dB
Isolation	≥30 dB	≥28 dB	≥28 dB	≥28 dB
Nominal Impedance	50 Ohms	50 Ohms	50 Ohms	50 Ohms
VSWR	≤ 1.5	≤ 1.5	≤ 1.5	≤ 1.5
Maximum Power	100 Watts	100 Watts	100 Watts	100 Watts
Lightning protection	DC ground	DC ground	DC ground	DC ground
Connector	2×N Female	2×N Female	2×N Female	2×N Female
Dimensions	850×128×56 mm	230×128×56 mm	500×128×56 mm	500×128×56 mm
Weight	2.9 kg	1.1 kg	1.5 kg	2.7 kg
Reflector	UPVC	UPVC	UPVC	UPVC
Colour	gray	gray	gray	gray
Adjustable Angle	0 ~ 12 °	0 ~ 15 °	0 ~ 15 °	0 ~ 12 °
Operating temperature	-40 ~ 60 °C	-40 ~ 60 °C	-40 ~ 60 °C	-40 ~ 60 °C
Wind Load	60 m/s	60 m/s	60 m/s	60 m/s
Mast Mount Diameter	35-75 mm	35-75 mm	35-75 mm	35-75 mm

[www.YDSCOMM.com](http://www.YDSCOMM.com) [sales@ydscomm.com](mailto:sales@ydscomm.com) Tel: (+86) 13790087202 (WeChat, QQ, Mobile)

# YDS COMMUNICATIONS ANTENNA

Professional Design Engineering Manufacturer Partner



Antenna Model No.	YDS2425ST15VHE-2N(F)	YDS2425ST9V1H2-3N(F)	YDS2425ST15V2H1-3N(F)	YDS2425ST15V2H1B-3N(F)
Frequency Range	2400-2500 MHZ	2400-2500 MHZ	2400-2500 MHZ	2400-2500 MHZ
Polarization	Vertical / Horizontal	1×Vertical / 2×Horizontal	2×Vertical / 1×Horizontal	2×Vertical / 1×Horizontal
Gain	15 dBi	9 dBi	15 dBi	15 dBi
Horizontal Beamwidth	115 °	65 °	65 °	65 °
Vertical Beamwidth	7.5 °	60 °	16 °	16 °
Front-to-back ratio	≥18 dB	≥20 dB	≥23 dB	≥23 dB
Isolation	≥20 dB	≥25 dB	≥28 dB	≥25 dB
Nominal Impedance	50 Ohms	50 Ohms	50 Ohms	50 Ohms
VSWR	≤ 1.5	≤ 1.5	≤ 1.5	≤ 1.5
Maximum Power	100 Watts	100 Watts	100 Watts	100 Watts
Lightning protection	DC ground	DC ground	DC ground	DC ground
Connector	2×N Female	3×N Female	3×N Female	3×N Female
Dimensions	850×128×56 mm	230×128×56 mm	420×280×85 mm	400×240×35 mm
Weight	3.2 kg	1 kg	2.3 kg	2.3 kg
Reflector	UPVC	UPVC	UPVC	ABS
Colour	gray	gray	gray	White
Adjustable Angle	0 ~ 10 °	0 ~ 15 °	0 ~ 15 °	0 ~ 15 °
Operating temperature	-40 ~ 60 °C	-40 ~ 60 °C	-40 ~ 60 °C	-40 ~ 60 °C
Wind Load	60 m/s	60 m/s	60 m/s	60 m/s
Mast Mount Diameter	35-75 mm	35-75 mm	35-75 mm	35-50 mm

[www.YDSCOMM.com](http://www.YDSCOMM.com) [sales@ydscomm.com](mailto:sales@ydscomm.com) Tel: (+86) 13790087202 (WeChat, QQ, Mobile)

All rights reserved @ YingDeShun Co. Ltd. (YDS Communications). Specifications subject to change without notice.



Antenna Model No.	YDS2425ST15V1X2-3N(F)	YDS2425ST14V2H1-3N(F)	YDS2425ST14V1X2-3N(F)	YDS5158ST16VH-2N(F)
Frequency Range	2400-2500 MHZ	2400-2500 MHZ	2400-2500 MHZ	5150-5850 MHZ
Polarization	Vertical / ±45°	2×Vertical / 1×Horizontal	Vertical / ±45°	Vertical / Horizontal
Gain	15 dBi	14 dBi	14 dBi	2×16 dBi
Horizontal Beamwidth	65 °	90 °	90 °	30 °
Vertical Beamwidth	16 °	15 °	15 °	15 °
Front-to-back ratio	≥23 dB	≥23 dB	≥23 dB	≥25 dB
Isolation	≥28 dB	≥25 dB	≥25 dB	≥28 dB
Nominal Impedance	50 Ohms	50 Ohms	50 Ohms	50 Ohms
VSWR	≤ 1.5	≤ 1.5	≤ 1.5	≤ 2
Maximum Power	100 Watts	100 Watts	100 Watts	50 Watts
Lightning protection	DC ground	DC ground	DC ground	DC ground
Connector	3×N Female	3×N Female	3×N Female	2×N Female
Dimensions	420×280×85 mm	470×167×55 mm	470×167×55 mm	230×128×56 mm
Weight	2.3 kg	1.8 kg	1.8 kg	1.1 kg
Reflector	UPVC	UPVC	UPVC	UPVC
Colour	gray	gray	gray	gray
Adjustable Angle	0 ~ 15 °	0 ~ 15 °	0 ~ 15 °	0 ~ 15 °
Operating temperature	-40 ~ 60 °C	-40 ~ 60 °C	-40 ~ 60 °C	-40 ~ 60 °C
Wind Load	60 m/s	60 m/s	60 m/s	60 m/s
Mast Mount Diameter	35-75 mm	35-75 mm	35-75 mm	35-75 mm

[www.YDSCOMM.com](http://www.YDSCOMM.com) [sales@ydscomm.com](mailto:sales@ydscomm.com) Tel: (+86) 13790087202 (WeChat, QQ, Mobile)



Antenna Model No.	YDS5158ST19VH-2N(F)	YDS5158ST15VH-2N(F)	YDS5158ST17VH-2N(F)	YDS5158ST17VHB-2N(F)
Frequency Range	5150-5850 MHZ	5150-5850 MHZ	5150-5850 MHZ	5150-5850 MHZ
Polarization	Vertical / Horizontal	Vertical / Horizontal	Vertical / Horizontal	Vertical / Horizontal
Gain	2×19 dBi	2×15 dBi	2×17 dBi	2×17 dBi
Horizontal Beamwidth	30 °	65 °	65 °	65 °
Vertical Beamwidth	7.5 °	15 °	7.5 °	10 °
Front-to-back ratio	≥25 dB	≥20 dB	≥20 dB	≥23 dB
Isolation	≥28 dB	≥28 dB	≥28 dB	≥28 dB
Nominal Impedance	50 Ohms	50 Ohms	50 Ohms	50 Ohms
VSWR	≤ 2.5	≤ 2	≤ 2	≤ 2
Maximum Power	50 Watts	50 Watts	50 Watts	50 Watts
Lightning protection	DC ground	DC ground	DC ground	DC ground
Connector	2×N Female	2×N Female	2×N Female	2×N Female
Dimensions	400×128×56 mm	230×128×56 mm	400×128×56 mm	454×137×30 mm
Weight	1.4 kg	1.1 kg	1.4 kg	0.8 kg
Reflector	UPVC	UPVC	UPVC	ABS
Colour	gray	gray	gray	White
Adjustable Angle	0 ~ 15 °	0 ~ 15 °	0 ~ 15 °	0 ~ 30 °
Operating temperature	-40 ~ 60 °C	-40 ~ 60 °C	-40 ~ 60 °C	-40 ~ 60 °C
Wind Load	60 m/s	60 m/s	60 m/s	60 m/s
Mast Mount Diameter	35-75 mm	35-75 mm	35-75 mm	35-60 mm

[www.YDSCOMM.com](http://www.YDSCOMM.com) [sales@ydscomm.com](mailto:sales@ydscomm.com) Tel: (+86) 13790087202 (WeChat, QQ, Mobile)



Antenna Model No.	YDS5158ST18VH-2N(F)	YDS5158ST14VH-2N(F)	YDS5158ST15.5VH-2N(F)	YDS4961ST16VH-2N(F)
Frequency Range	5150-5850 MHZ	5150-5850 MHZ	5150-5850 MHZ	4900-6100 MHZ
Polarization	Vertical / Horizontal	Vertical / Horizontal	Vertical / Horizontal	Vertical / Horizontal
Gain	2×18 dBi	2×14 dBi	2×15.5 dBi	2×16 dBi
Horizontal Beamwidth	65 °	90 °	90 °	90 °
Vertical Beamwidth	6.5 °	15 °	7.5 °	8 °
Front-to-back ratio	≥20 dB	≥20 dB	≥20 dB	≥25 dB
Isolation	≥28 dB	≥28 dB	≥28 dB	≥28 dB
Nominal Impedance	50 Ohms	50 Ohms	50 Ohms	50 Ohms
VSWR	≤ 2	≤ 2	≤ 2	≤ 2
Maximum Power	50 Watts	50 Watts	50 Watts	50 Watts
Lightning protection	DC ground	DC ground	DC ground	DC ground
Connector	2×N Female	2×N Female	2×N Female	2×N Female
Dimensions	500×128×56 mm	230×128×56 mm	400×128×56 mm	454×137×30 mm
Weight	1.6 kg	1.2 kg	1.4 kg	0.8 kg
Reflector	UPVC	UPVC	UPVC	ABS
Colour	gray	gray	gray	White
Adjustable Angle	0 ~ 15 °	0 ~ 15 °	0 ~ 15 °	0 ~ 30 °
Operating temperature	-40 ~ 60 °C	-40 ~ 60 °C	-40 ~ 60 °C	-40 ~ 60 °C
Wind Load	60 m/s	60 m/s	60 m/s	60 m/s
Mast Mount Diameter	35-75 mm	35-75 mm	35-75 mm	35-60 mm

[www.YDSCOMM.com](http://www.YDSCOMM.com) [sales@ydscomm.com](mailto:sales@ydscomm.com) Tel: (+86) 13790087202 (WeChat, QQ, Mobile)



# YDS COMMUNICATIONS ANTENNA

Professional Design Engineering Manufacturer Partner



Antenna Model No.	YDS5158ST16VHB-2N(F)	YDS4961ST16.5VH-2N(F)	YDS5158ST16.5VH-2N(F)	YDS5158ST18VHB-2N(F)
Frequency Range	5150-5850 MHZ	4900-6100 MHZ	5150-5850 MHZ	5150-5850 MHZ
Polarization	Vertical / Horizontal	Vertical / Horizontal	Vertical / Horizontal	Vertical / Horizontal
Gain	2×16 dBi	2×16.5 dBi	2×16.5 dBi	2×18 dBi
Horizontal Beamwidth	90 °	90 °	90 °	90 °
Vertical Beamwidth	8 °	6.5 °	6.5 °	4 °
Front-to-back ratio	≥25 dB	≥20 dB	≥20 dB	≥20 dB
Isolation	≥28 dB	≥28 dB	≥28 dB	≥28 dB
Nominal Impedance	50 Ohms	50 Ohms	50 Ohms	50 Ohms
VSWR	≤ 2	≤ 2	≤ 2	≤ 2
Maximum Power	50 Watts	50 Watts	50 Watts	50 Watts
Lightning protection	DC ground	DC ground	DC ground	DC ground
Connector	2×N Female	2×N Female	2×N Female	2×N Female
Dimensions	454×137×30 mm	500×128×56 mm	500×128×56 mm	760×128×56 mm
Weight	0.8 kg	1.6 kg	1.6 kg	3 kg
Reflector	ABS	UPVC	UPVC	UPVC
Colour	White	gray	gray	gray
Adjustable Angle	0 ~ 30 °	0 ~ 15 °	0 ~ 15 °	0 ~ 15 °
Operating temperature	-40 ~ 60 °C	-40 ~ 60 °C	-40 ~ 60 °C	-40 ~ 60 °C
Wind Load	60 m/s	60 m/s	60 m/s	60 m/s
Mast Mount Diameter	35-60 mm	35-75 mm	35-75 mm	35-75 mm

[www.YDSCOMM.com](http://www.YDSCOMM.com) [sales@ydscomm.com](mailto:sales@ydscomm.com) Tel: (+86) 13790087202 (WeChat, QQ, Mobile)

All rights reserved @ YingDeShun Co. Ltd. (YDS Communications). Specifications subject to change without notice.

# YDS COMMUNICATIONS ANTENNA

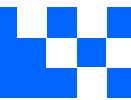
Professional Design Engineering Manufacturer Partner



Antenna Model No.	YDS5158ST18VHC-2N(F)	YDS5158ST16VH-2xU.FL	YDS0826ST812V2H1X2-5N(F)	YDS2458ST14.517VH-2N(F)
Frequency Range	5150-5850 MHZ	5150-5850 MHZ	890-960/2400-2500/1710-2690 MHZ	2400-2500 / 5150-5850 MHZ
Polarization	Vertical / Horizontal	Vertical / Horizontal	Vertical / Vertical / Horizontal / $\pm 45^\circ$	Vertical / Horizontal
Gain	2x18 dBi	2x16 dBi	8 / 12 / 12 dBi	14.5 dBi / 17 dBi
Horizontal Beamwidth	90 °	30 °	65 ° / 65 ° / 65 °	40 ° / 20 °
Vertical Beamwidth	4 °	15 °	55 ° / 30 ° / 30 °	20 ° / 11 °
Front-to-back ratio	$\geq 20$ dB	$\geq 25$ dB	$\geq 20$ Db / $\geq 25$ dB / $\geq 25$ dB	$\geq 25$ dB
Isolation	$\geq 28$ dB	$\geq 28$ dB		$\geq 28$ dB
Nominal Impedance	50 Ohms	50 Ohms	50 Ohms	50 Ohms
VSWR	$\leq 2$	$\leq 2$	$\leq 1.5$ / $\leq 1.5$ / $\leq 1.5$	$\leq 1.5$ / $\leq 2$
Maximum Power	50 Watts	50 Watts	200 Watts	100 Watts
Lightning protection	DC ground	DC ground	DC ground	
Connector	2xN Female	2xU.FL	5xN Female	2xN Female
Dimensions	760x180x60 mm	230x128x56 mm	580x320x80 mm	420x280x85 mm
Weight	3 kg	1.1 kg	5 kg	2.3 kg
Reflector	UPVC	UPVC	UPVC	PVC
Colour	gray	gray	gray	gray
Adjustable Angle	0 ~ 15 °	0 ~ 15 °	0 ~ 10 °	0 ~ 15 °
Operating temperature	-40 ~ 60 °C	-40 ~ 60 °C	-40 ~ 60 °C	-40 ~ 60 °C
Wind Load	60 m/s	60 m/s	60 m/s	60 m/s
Mast Mount Diameter	35-75 mm	35-50 mm	40-70 mm	35-75 mm

[www.YDSCOMM.com](http://www.YDSCOMM.com) [sales@ydscomm.com](mailto:sales@ydscomm.com) Tel: (+86) 13790087202 (WeChat, QQ, Mobile)

All rights reserved @ YingDeShun Co. Ltd. (YDS Communications). Specifications subject to change without notice.



Antenna Model No.	YDS0826ST9X4-4N(F)
Frequency Range	824-960 / 1710-2690 MHZ
Polarization	$\pm 45^\circ / \pm 45^\circ$
Gain	9 dBi / 9 dBi
Horizontal Beamwidth	$65^\circ / 65^\circ$
Vertical Beamwidth	$60^\circ / 55^\circ$
Front-to-back ratio	$\geq 20$ dB / $\geq 25$ dB
Isolation	$\geq 25$ dB / $\geq 25$ dB
Nominal Impedance	50 Ohms
VSWR	$\leq 1.5 / \leq 1.7$
Maximum Power	200 Watts
Lightning protection	DC ground
Connector	N Female / 3×N Female
Dimensions	320×280×125 mm
Weight	2 kg
Reflector	UPVC
Colour	gray
Adjustable Angle	$0 \sim 10^\circ$
Operating temperature	$-40 \sim 60^\circ\text{C}$
Wind Load	60 m/s
Mast Mount Diameter	40-70 mm